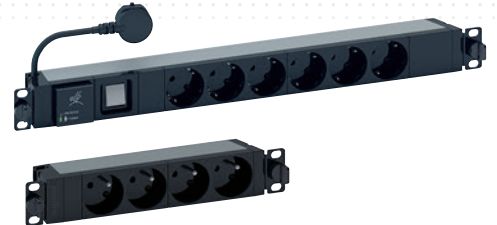


NEW RANGE OF PDUs & iPDUs

LCS 3

3 DIMENSIONS OF EXCELLENCE

PERFORMANCE SCALABILITY EFFICIENCY



INNOVATIVE POWER INFRASTRUCTURE
SOLUTIONS FOR DATA CENTERS
AND NETWORKS

GLOBAL SPECIALIST IN ELECTRICAL AND DIGITAL
BUILDING INFRASTRUCTURES

legrand®

LCS

3

3 DIMENSIONS OF EXCELLENCE

● PERFORMANCE ● SCALABILITY ● EFFICIENCY



EXCLUSIVE TO LEGRAND

OUR PDUs FEATURE EXCLUSIVE LEGRAND INNOVATIONS. THEY ARE IDENTIFIED BY THE FOLLOWING SYMBOLS

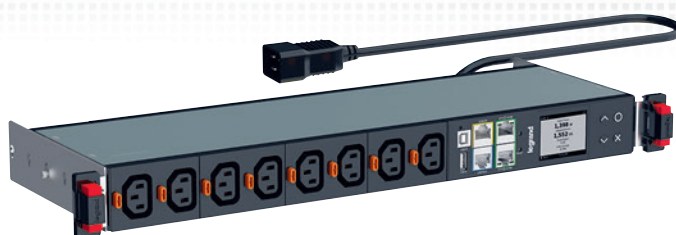


iPDUs, INTELLIGENCE AT THE HEART OF YOUR NETWORKS

From a complete data center to a small-scale Edge deployment, Legrand's range of power products now integrates new intelligent PDUs (iPDUs) which can be used to monitor and control the rack power infrastructure remotely, in order to efficiently manage power capacity and ensure uptime.

CONTENTS

| | |
|----|--|
| 02 | SOLUTIONS FOR ANY CONFIGURATION |
| 04 | INTELLIGENT POWER SUPPLY MANAGEMENT |
| 06 | CORD LOCKING SYSTEM, INNOVATION AT THE HEART OF PDUs |
| 08 | ZERO-U PDUs, INNOVATION & PERFORMANCE |
| 10 | 1-U PDUs, INNOVATION & CONVENIENCE |
| 12 | NEW CONTROLLER, THE HEART OF iPDUs |
| 14 | METERED & SWITCHED iPDUs, ADVANCED MONITORING |
| 16 | SWITCHED iPDUs, METERING AND CONTROL |
| 18 | METERED iPDUs, ENERGY MEASUREMENT |
| 19 | METERED & SWITCHED iPDUs WITH RARITAN SMARTSENSORS™ |
| 20 | PROTECTION ACCESSORIES |
| 22 | SERVICES: STANDARD AND CONFIGURE-TO-ORDER PDUs |
| 24 | SELECTION CHART |
| 26 | CATALOGUE PAGES |



PDU_s, SOLUTIONS FOR ANY CONFIGURATION

A WIDE UNIVERSAL RANGE

The new PDU offer combines Legrand's quality and innovation with a wide range of applications. A standalone solution, this range integrates seamlessly into any installation, ensuring compliance with applicable standards.

GENERAL CHARACTERISTICS

- Anodised aluminium Chassis:
High-quality material, lightweight and rigid
- Modular design:
Expandable socket and function modules

SAFETY

- High-quality electrics
- High-quality connection
- Sockets equipped with safety shutter

- **Cord Locking system** (see page 6)



POWER SUPPLY

- 16 A to 32 A, single- or three-phase
- PDUs incorporating both international and local type sockets



STANDARDS

IEC 60950 - Information technology equipment - Safety

IEC 60297-3 - Dimensions of mechanical structures of the 482.6 mm series [19 in]

IEC 60320-2-2 - Appliance couplers for C13 and C19 electrical equipment

IEC 60884-1 - French/Belgian and German standard plugs/sockets

BS 1363-2 - British standard plugs/sockets

IEC 60309 - Industrial plugs

Certification: CE, TSE, CCC

Environmentally-friendly products
Eco-design



ZERO-U PDU

P.8 to 11



FOR DATA CENTERS/SERVER ROOMS

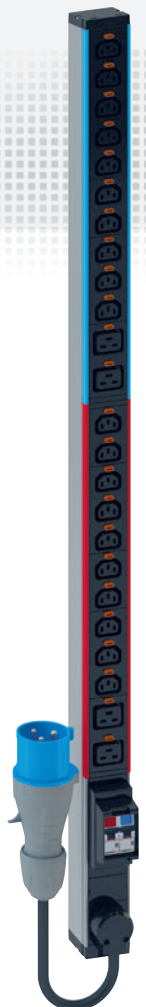
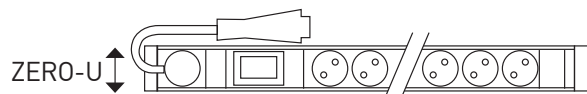
These are used in server cabinets where:

- there is a high density of active equipment
- electrical distribution quality is crucial

14 BASIC PDU CATALOGUE NUMBERS

9 INTELLIGENT PDU CATALOGUE NUMBERS

FOR VERTICAL INSTALLATION



1-U PDU 19"



FOR DATA CENTERS, EDGE SERVER ROOMS AND COMPUTER ROOMS

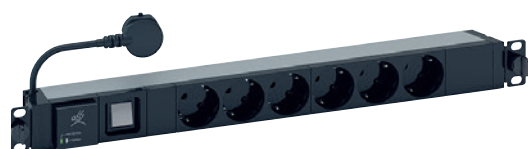
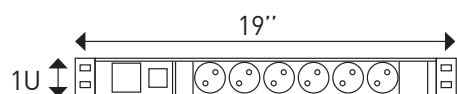
These are used in patching and server enclosures where:

- there is a low density of active equipment to be powered
- ease of installation is an advantage

29 BASIC PDU CATALOGUE NUMBERS

4 INTELLIGENT PDU CATALOGUE NUMBERS

FOR VERTICAL OR HORIZONTAL INSTALLATION



1-U PDU 10"



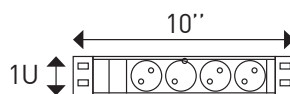
FOR SMALL IT ENVIRONMENTS

These are mainly used in small-scale commercial applications where there are a limited number of computer workstations and a 10" cabinet is sufficient:

- Small businesses, freelance professions, administrative services, etc.

3 CATALOGUE NUMBERS

HORIZONTAL PDU



INTELLIGENT, EFFICIENT POWER SUPPLY MANAGEMENT

INCORPORATING INTELLIGENT, INNOVATIVE FUNCTIONS

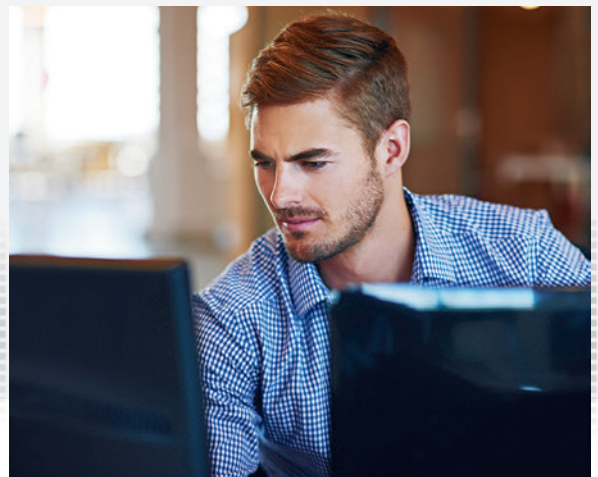
PDU's can help meet the needs for energy while incorporating intelligent functions, including real-time power metering and environmental monitoring. Connected PDU's (iPDUs) include measurement of consumption and switching of active power and remote alarm with volts, amperes, real-time power (kW) and energy (kWh) measurements.



Legrand Metered and Switched models provide the most common power supply configurations to meet the needs of data centers and local networks.

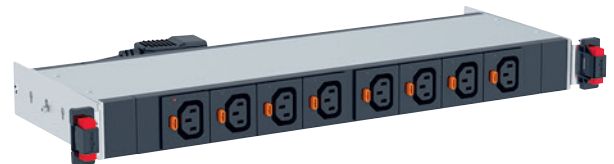
BASIC PDU's

P.8 to 11



ENERGY DISTRIBUTION

For implementation in LANs or data centers, these are easily mounted and have numerous configuration options



AVAILABLE IN VERTICAL ZERO-U
AND HORIZONTAL 1U 19" VERSIONS

METERED & SWITCHED iPDUs P.14 to 19



POWER SWITCHING AND REAL-TIME MONITORING

With input metering and output level switching, these can be used to remotely control the power of devices and supply the necessary information as needed. Multiple configurations are available

METERED iPDUs P.18



ACCURATE MEASUREMENT

With input metering, Legrand PDUs can provide accurate energy consumption measurements. Multiple configurations possible

| PDU FUNCTIONS BY RANGE | BASIC | METERED | SWITCHED |
|---|-------|---------|----------|
| Ammeter | • | | |
| Phase measurement (kWh, V, A, PF) | | • | • |
| Circuit measurement (kWh, V, A, PF) | | • | • |
| Circuit breaker trip detection | | • | • |
| Socket management (Switching & Control) | | | • |

CORD LOCKING SYSTEM

INNOVATION AT THE HEART OF PDUs

FOR C13 & C19
SOCKET
OUTLETS

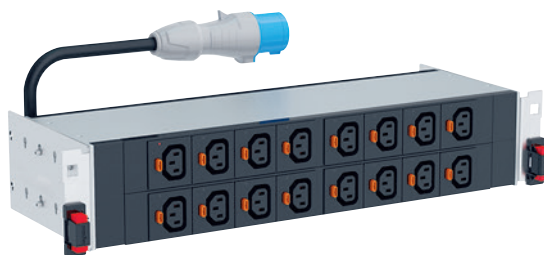
Security of cable connection at rack level is a critical element which must be considered to ensure longevity of the installation. All Legrand PDUs have a power supply cord locking system which prevents accidental disconnection due to human error or vibration and guarantees absolute safety. Function integrated in all Legrand PDUs: Basic, Metered, Metered and Switched.

AN INNOVATIVE TECHNICAL SOLUTION



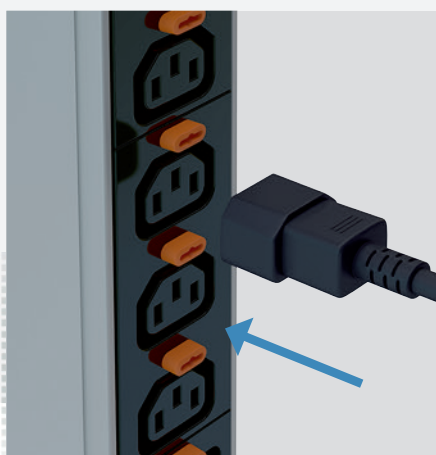
CORD LOCKING SYSTEM

Very easy to identify thanks to the orange buttons next to each socket outlet





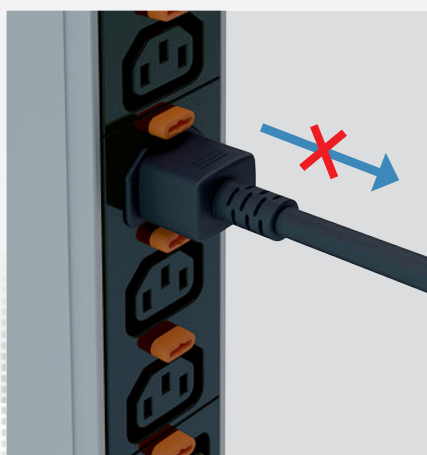
1 CONNECTION



CORD CONNECTION

The cord is connected to the socket naturally in one smooth action

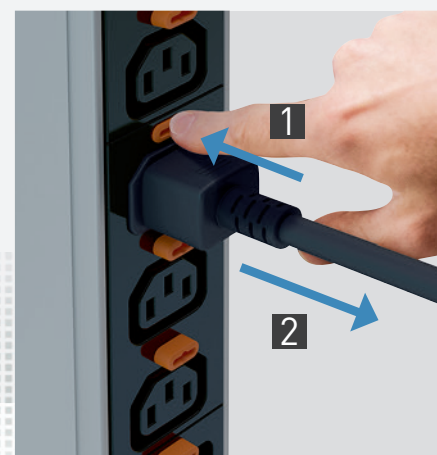
2 AUTO LOCKING



CORD HELD IN PLACE

Once the power supply cord is connected, it locks automatically and cannot be removed

3 UNLOCKING

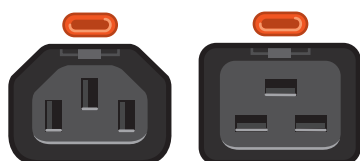


EASY REMOVAL

Simply pressing the unlock button releases the cord from the socket

UNIVERSAL SYSTEM

Takes all cords for standard C13 and C19 sockets



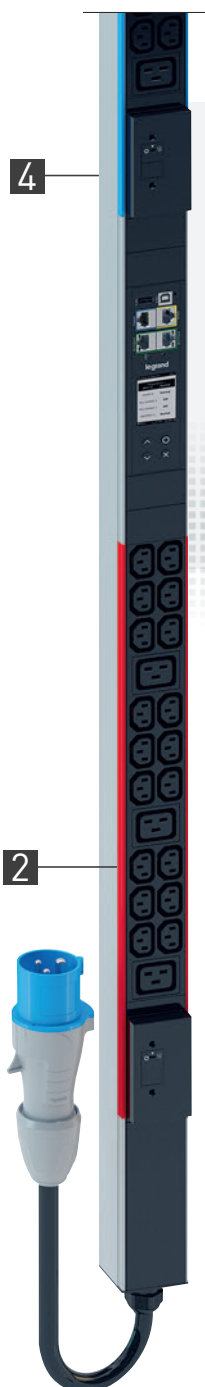
EXCLUSIVE TO LEGRAND

ZERO-U PDUs

INNOVATION & PERFORMANCE

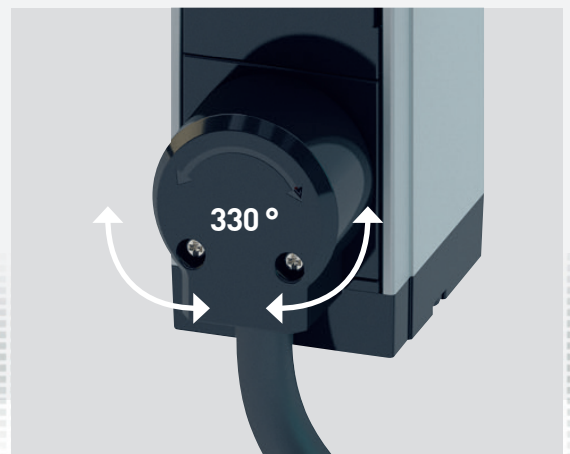
EXCLUSIVE INNOVATIONS

Every detail matters! Legrand's unique and original innovations help ensure optimum performance for the ZERO-U range of PDUs, in terms of safety, simplified setup and integration, consumption indicators, etc.



STANDARD STRUCTURE FOR BASIC, METERED & SWITCHED PDUs

1 ROTATIVE CABLE ENTRY



CABLE ORIENTATION

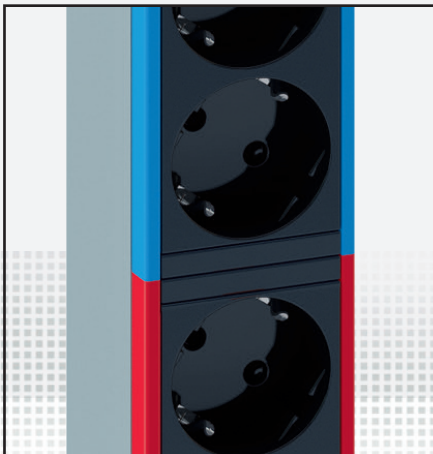
330° rotatable cable entry for perfect cable orientation and no interference in the cabinet



VERTICAL
INSTALLATION



2 CIRCUIT MARKING

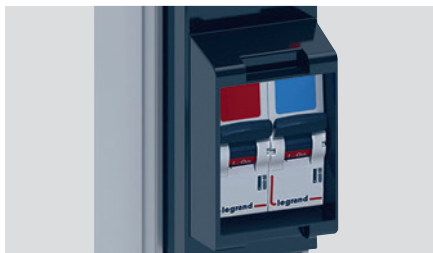


CIRCUIT IDENTIFICATION

Each circuit is colour-coded, with the colour visible on the front panel and along the edges of a module. The colour corresponds to the specific MCB protecting the circuit.

OPTIONS FOR BASIC PDUs ONLY

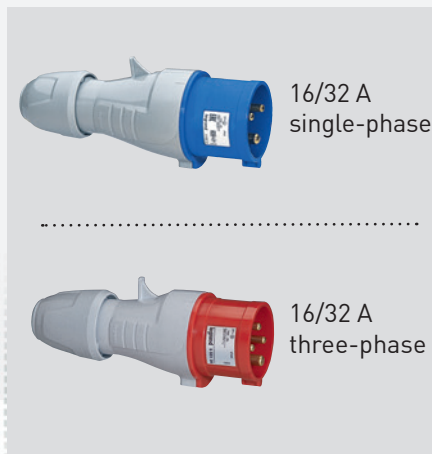
5 CIRCUIT BREAKER HOLDER



ENHANCED PROTECTION

Circuits protected by a circuit breaker. Holder with overhanging edges to prevent accidental breakages. (Cover available on request)

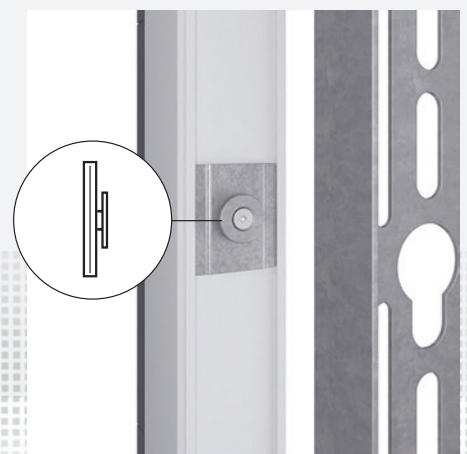
3 INPUT POWER



ENHANCED PROTECTION

There are multiple solutions depending on power supply requirements

4 SCREWLESS MOUNTING



FIXED IN BUTTONHOLE SLOTS

ZERO-U PDUs simply clip vertically into buttonhole slots on the mounting bracket without the need for any screws.

6 AMMETER



CONSUMPTION INDICATOR

- Circuit balancing
- Display of available capacity
- Overload prevention

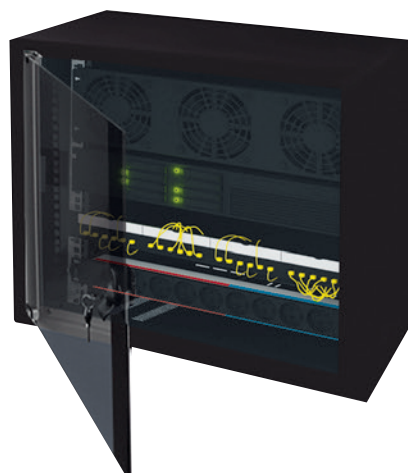
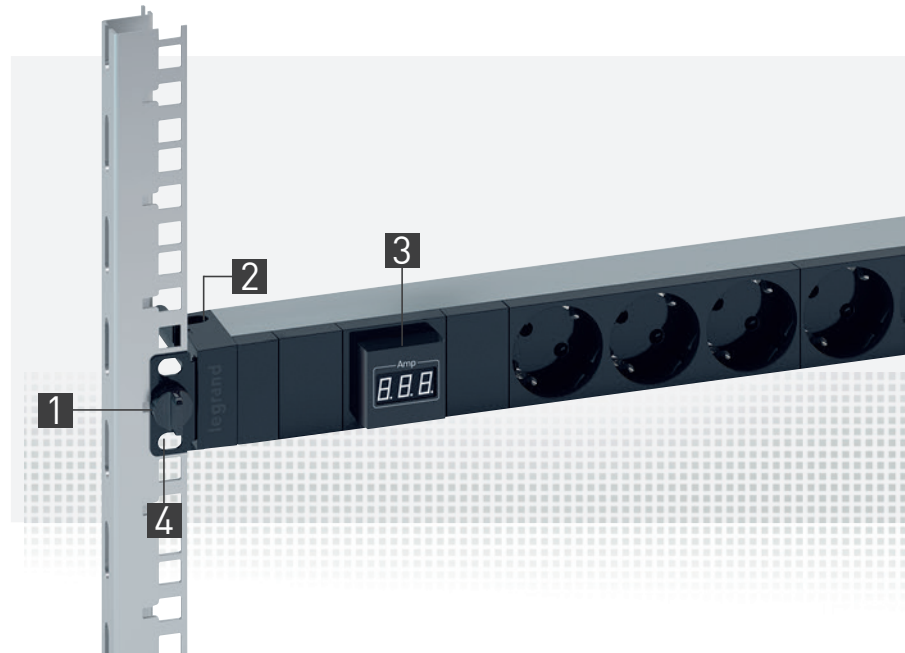
EXCLUSIVE TO LEGRAND

1-U PDUs

INNOVATION & CONVENIENCE

SIMPLE SETUP AND INTEGRATION

The 19" PDUs designed for installation in server cabinets and patch panels also incorporate the latest innovations for facilitating integration and maintenance, with clever mounting and operating features.



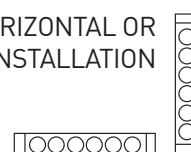
PDU 1 U 10"

Specially designed for local area networks, these PDUs feature the same innovations as the 19" range.

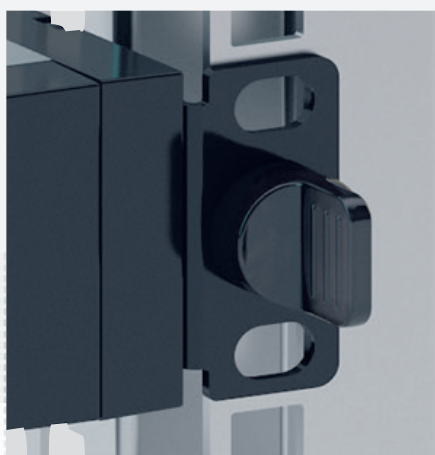
HORIZONTAL
INSTALLATION



HORIZONTAL OR
VERTICAL INSTALLATION



1 SNAP-ON FIXING



TOOLLESS INSTALLATION

Snap-on fixing on 19" uprights
No need for screws or nuts.
Toolless installation.

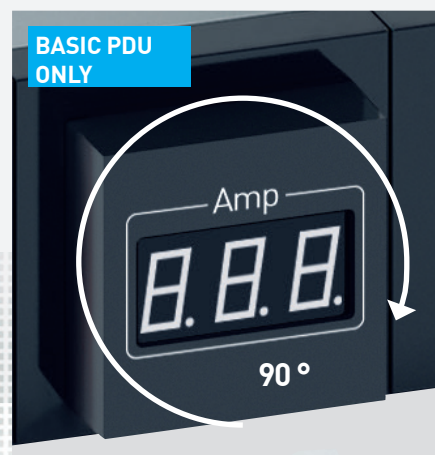
2 CABLE GUIDE



OPTIMISING SPACE

Cables are held firmly in place by a
cable guide.

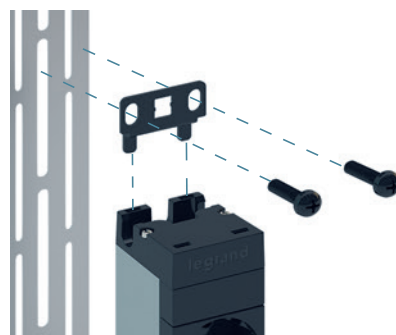
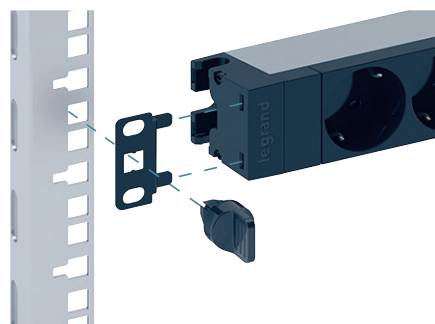
3 AMMETER



ROTATABLE DISPLAY

The ammeter can be rotated 90°
to ensure easy reading regardless
of mounting position (horizontal or
vertical).

4 MOUNTING BRACKETS



HORIZONTAL OR VERTICAL

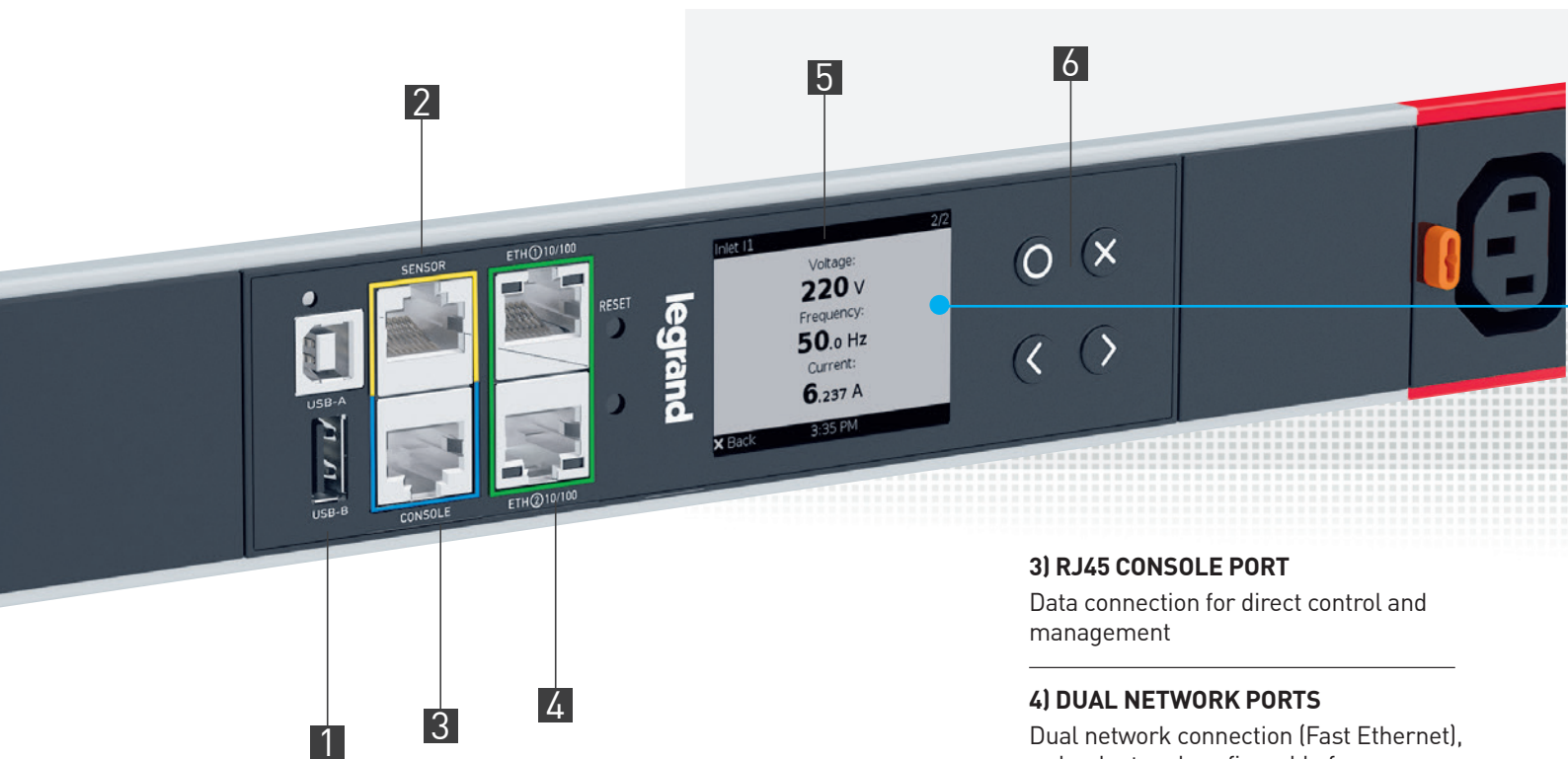
Designed for horizontal toolless
mounting, 1-U PDUs can also
be mounted vertically simply by
rotating the mounting lugs. Vertical
mounting requires a bolt and nut to
fix the PDU securely to the bracket.

EXCLUSIVE TO LEGRAND

NEW CONTROLLER: THE HEART OF IPDUs

A WIDE BRIGHT COLOR LCD DISPLAY

The new Legrand PDU controller allows local access to all critical measurement data. The bright color LCD display will change colour according to the alert level detected by the iPDUs; your field technicians can quickly identify iPDUs on which the thresholds have been exceeded, obtain correct power supply data immediately and take appropriate action.



1) USB-A AND B PORTS



USB A and B ports for connecting peripheral devices, so data can be viewed on smartphones

2) RJ45 SENSOR PORT



Plug & Play sensor port for directly connecting temperature and humidity sensors and the Raritan SmartSensor™ range

3) RJ45 CONSOLE PORT

Data connection for direct control and management

4) DUAL NETWORK PORTS

Dual network connection (Fast Ethernet), redundant and configurable for access to the PDU from 2 different networks, ideal for Colocation projects or for daisy-chaining PDUs

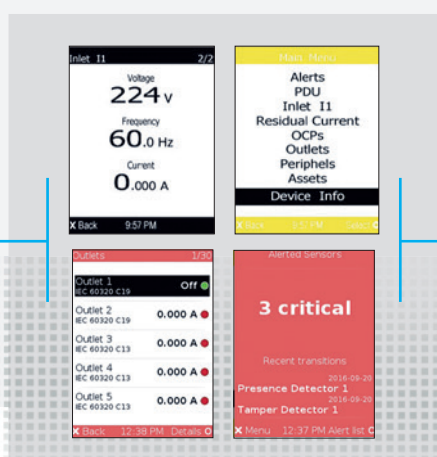
5) LCD COLOR SCREEN

220 X 176 mm super bright screen with configurable measurement data display

6) INTUITIVE NAVIGATION BUTTONS

Navigation buttons for local screen

LOCAL DISPLAY



ADAPTIVE COLOUR SCREEN

The LCD display on the unit changes colour according to the alert level, making it easier for the technical teams to see the information

NEW PDU HTML USER INTERFACE



DIRECTLY ACCESSIBLE DATA

Makes it easier to view the data center power supply data and information about the environment. The responsive Web graphic interface can be accessed from any device or tablet, or directly from a desktop computer. The redesigned overview screen provides the most important

information at a glance, so you can easily monitor your PDU health and critical data, and also view the cabinet energy consumption in real time.

DCIM MONITORING

Legrand Metered and Switched PDUs can be used to export measurement and control data to any DCIM platform such as Sunbird Power IQ.



METERED & SWITCHED iPDUs

ADVANCED MONITORING

GOLD STANDARD ACCURACY

The first step in preventing outages in your data center consists of making sure that you have the most reliable and accurate monitoring data. Legrand iPDUs are certified to have +/- 1% measurement accuracy with all types of load in real time, you can be sure that your PDU is supplying the necessary information as and when needed.

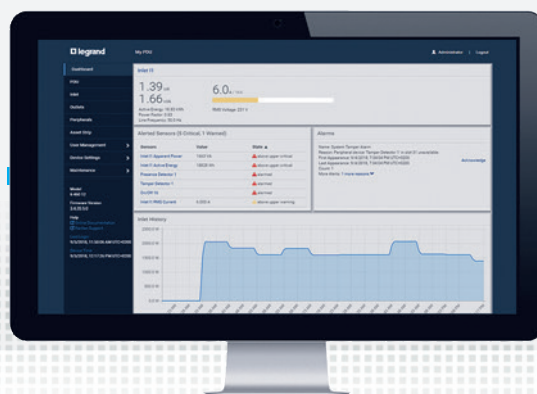
ACCURATELY MEASURED ENERGY CONSUMPTION



REAL-TIME MEASUREMENT

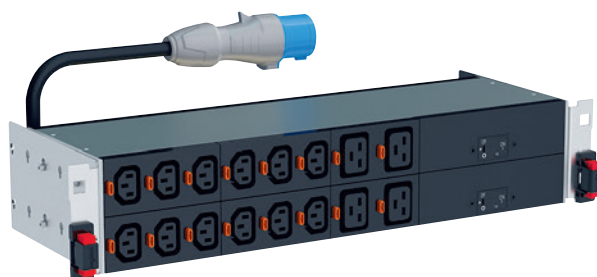
Legrand PDUs are certified to have +/- 1% measurement accuracy with all types of load in real time, so you can be sure that your PDU is supplying the necessary information as and when needed.

With Legrand's Metered and Switched PDUs, a billing-grade energy metering chip is dedicated to the Inlet power supply module and provides extremely accurate KWH data for each tap-off circuit.



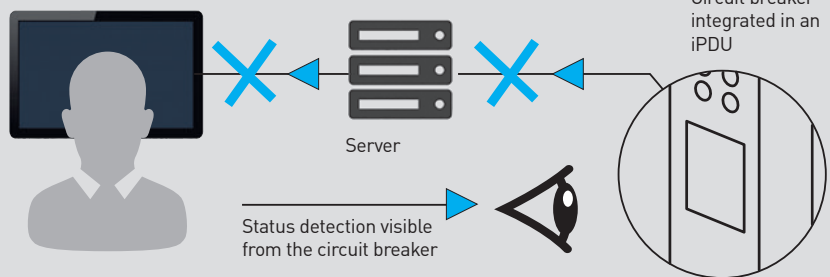
+/-1% HIGH-PERFORMANCE INPUT MEASUREMENT

Legrand PDUs benefit from the metering technology of Raritan, delivering a high-end measurement performance, which gives a clear picture of energy consumption.



CIRCUIT BREAKER INTELLIGENCE AND BRANCH CIRCUIT MONITORING

If a server power supply fails, your energy management system in the electrical panel will not detect this condition, only detection of the circuit breaker trip status will keep you informed in real time!



MONITORING CURRENT AND VOLTAGE AT THE CIRCUIT BREAKER LEVEL

Legrand iPDUs are equipped with standard Circuit breaker status monitoring and branch circuit metering (on 32A models), providing critical load-balancing and circuit load information per phase. This allows you to be alerted in time and avoid circuit overloads.

They can also be used to activate configurable alerts when a measurement is exceeded or when a circuit breaker drops. You are directly informed of the loss of power and can react quickly, preventing overloads on other circuits.

CIRCUIT OVERLOAD ALARM

Alarms defined by the user warn the IT managers and data centers of potential circuit overloads so as to prevent accidental loss of power to critical equipment.

SWITCHED iPDUs

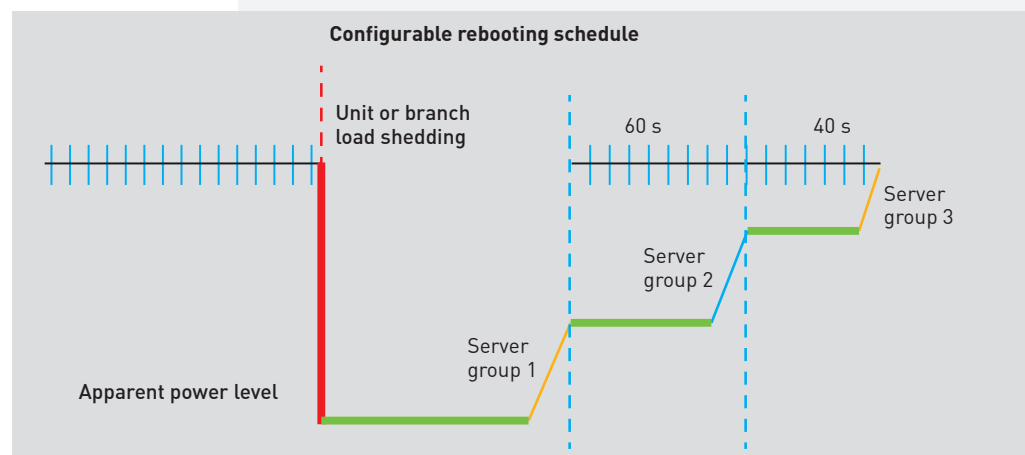
METERING & CONTROL

EASIER POWER MANAGEMENT

Legrand iPDUs also integrate input metering and output level switching, providing granular power switching of each device connected to the iPDU, and making it easier to manage IT installations remotely, while helping to improve availability.

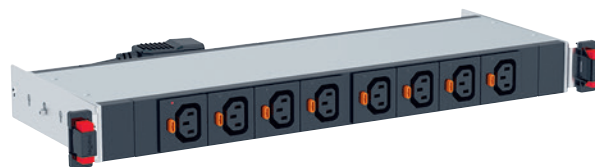


1 CONFIGURABLE OUTLET REBOOTING SCHEDULE



OUTPUT CONTROL

Automated restarting, load shedding and individual output control of socket outlets. Used to schedule restarting on each socket outlet in order to minimise the impact of the peak current on the servers.



AVAILABLE IN VERTICAL ZERO-U
AND HORIZONTAL 1U 19" VERSIONS

2 CIRCUIT BREAKER INTELLIGENCE

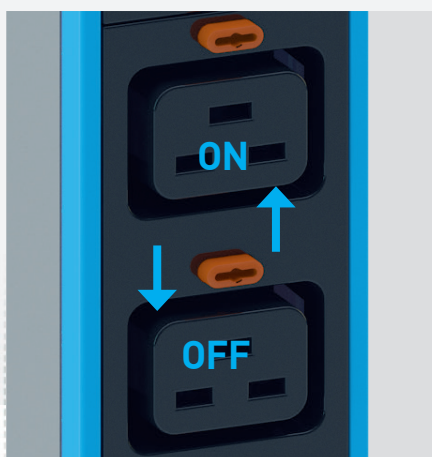


MAGNETIC-HYDRAULIC CIRCUIT BREAKER

Above 16 Amps, Legrand iPDUs have rugged circuit breakers with delayed tripping curve, guaranteeing maximum flexibility and safety of people and equipment.

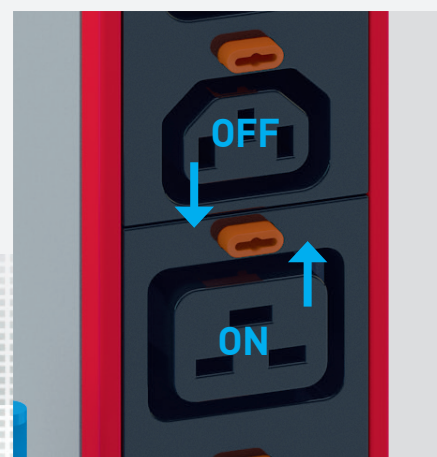
The circuit breakers are monitored by the embedded firmware and issue configurable alerts in the event of an overload or unwanted tripping.

3 REMOTE SOCKET OUTLET MANAGEMENT



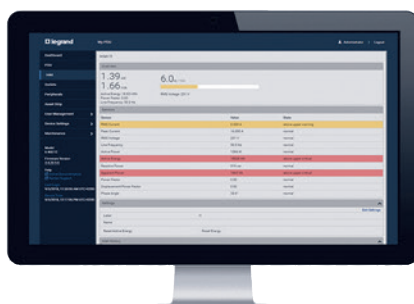
CONFIGURABLE CIRCUIT MANAGEMENT

Option of remotely switching sockets between one another and activating or deactivating individual sockets in real time on the network and managing the power sequencing of your device.



The use of switched models allows users to deactivate unavailable sockets remotely and avoid overloading the circuits by plugging in additional devices.

4 PROTECTION AGAINST UNCONTROLLED CONNECTIONS



REMOTE SOCKET MANAGEMENT

Remote socket management prevents human errors and can check that devices are only plugged in on available circuits, thus preventing overloads.

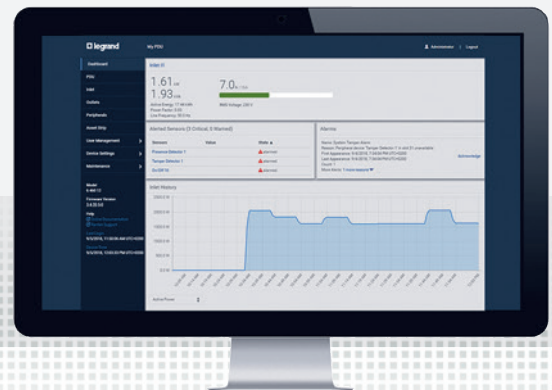
METERED iPDUs

ENERGY METERING

SEE ALL
CONSUMPTION
AT A GLANCE

Legrand iPDUs incorporate input metering, allowing accurate measurement of the unit's energy consumption, making it easy to understand power and manage data center growth.

CONNECTED LOADS



EASIER DATA COLLECTION IN THE CABINET

No more need to call in the technical teams to take on-site measurements in order to find out the energy consumption of your equipment, your intelligent iPDU takes care of it for you....

UNIT POWER

The overview of the rack power capacity and energy use makes it easy to understand clearly the remaining capacity in the cabinet so as to assist decisions about future growth.

METERED & SWITCHED WITH RARITAN PERIPHERALS

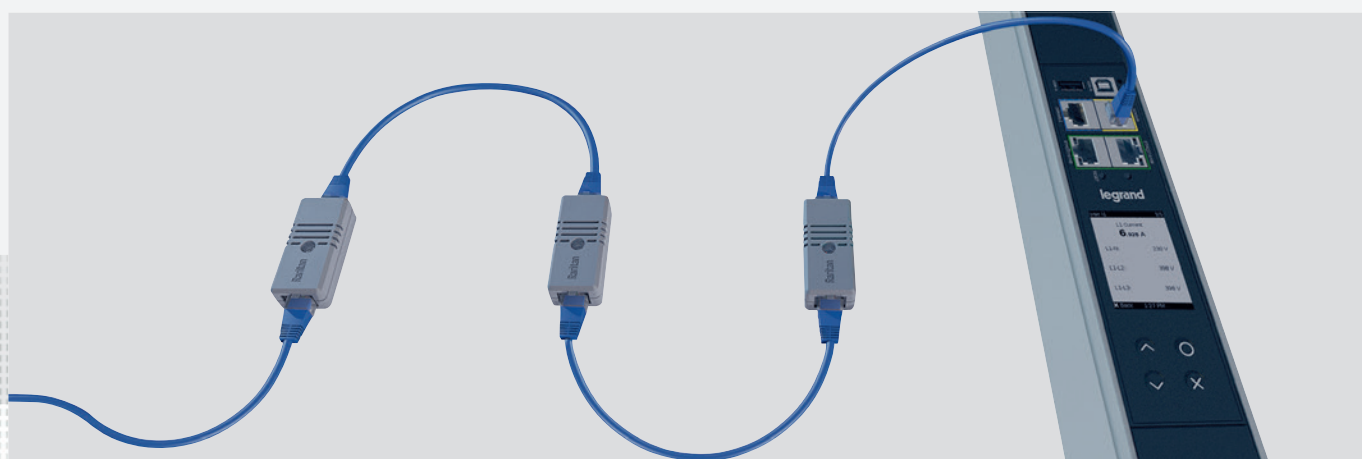
EASIER ACCESS CONTROL AND ENVIRONMENTAL MONITORING

By incorporating the Raritan technology platform, Legrand iPDUs benefit from the whole range of **SmartLock™** electronic door handles, and **SmartSensor™** environmental monitoring products. These plug and play peripherals make it easy to oversee the whole installation directly from your iPDU!

SmartSensor™ includes: temperature, humidity and contact closure sensors.

SmartLock™ includes: simple electronic handles, plus 125 kHz and 13.56 MHz card reader handles.

1 RARITAN SMARTSENSORS™



EASIER CONNECTION AND INTEGRATION

RJ45 technology simplifies the connectivity and implementation of sensors. All Raritan SmartSensors are easily integrated in the cabinet and can

be connected in a daisy-chain and replaced without having to rewire the cabinet.

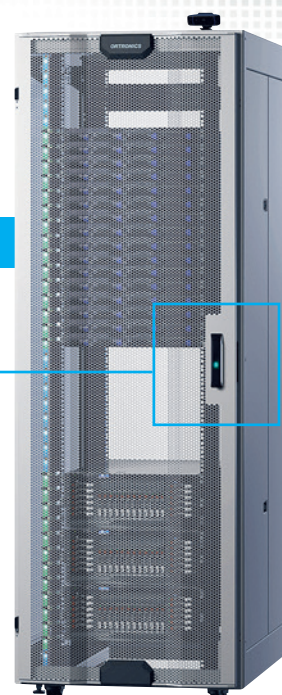
www.raritan.com/smartsensors

2 RARITAN SMARTLOCK™

SIMPLIFIED ACCESS, CONTROL AND COMPLIANCE

Plug and Play with Raritan SmartLock™ electronic handles, Legrand iPDUs allow you to control and secure access to the cabinet with ease

www.raritan.com/smartlock



ACCESSORIES

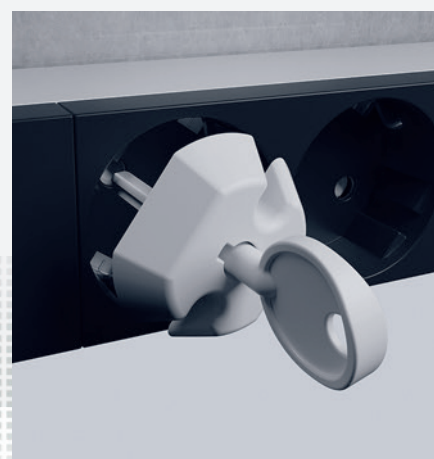
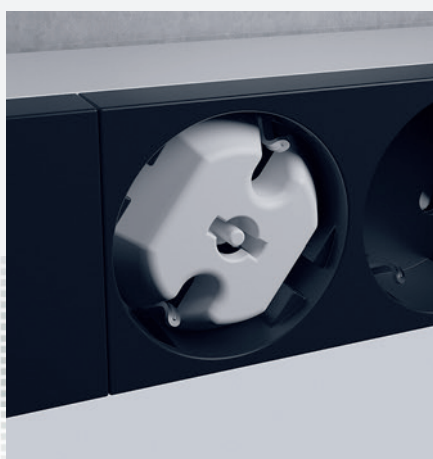
FOR PROTECTION

ENHANCED SAFETY AND CONTROL

Compatible with all the PDUs in the Legrand range, the complementary accessories allow you to control the socket power supply and protect against overvoltages.



1 SOCKET LOCKING CAP



CONTROLLING ACCESS TO THE POWER SUPPLY

The locking cap can be used to lock access to a socket. A special key is required to unlock it.

Locking caps are available for the following socket standards: C13, C19, German, French-Belgian, British.



2 SURGE PROTECTIVE DEVICE



MODULAR SURGE PROTECTION

The surge protection module protects equipment against overvoltages and incorporates hot swap technology. It can be used to replace a used module without interrupting the power supply to the other equipment connected to the PDU.

This is an essential accessory for business servers which need continuous protection. The module is equipped with a warning LED which indicates when it needs replacing.

EXCLUSIVE TO LEGRAND

SERVICES

TAILORED TO YOUR PROJECTS

OFFERING MODULARITY AND RESPONSIVENESS

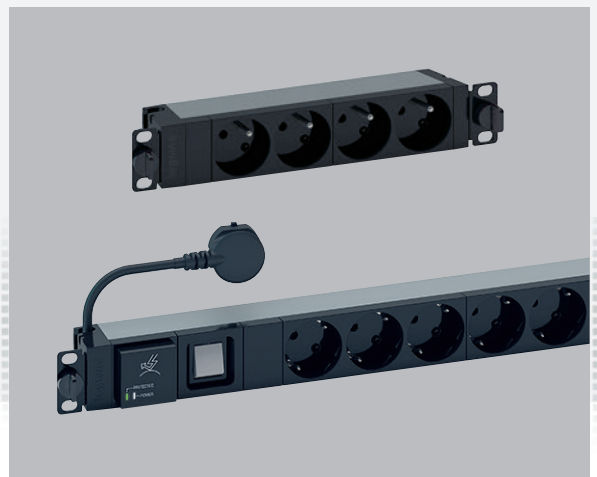
Legrand has leveraged its expertise to develop its new range of PDUs designed to function at the heart of your installations. Available in 2 formats - standard and configure-to-order products - the versatility of our range offers you greater flexibility and responsiveness.



CATALOGUE NUMBERS

Find all the catalogue numbers in the e-catalogue available at legrand.com

STANDARD CONFIGURATIONS



READY-TO-USE

Standard PDU ranges for fixed configurations which meet the most common requirements.

IPDUs AND BASIC
PDUs IN STANDARD
CONFIGURATION

60+
CATALOGUE
ITEMS



AVAILABLE
IN STOCK

PDU's CONFIGURE TO ORDER AS REQUIRED

SPECIALLY DESIGNED FOR SPECIFIC APPLICATIONS

Our PDUs are designed to ensure flexibility of use and to meet the needs of specialists. Whether you need more sockets or a higher power rating, specific protection or whether you wish to apply colour-coded identification to accentuate the redundant power supply, PDUs can do whatever you need.

CHOICE OF CONFIGURATIONS

CHOICE OF PLUG



16/32 A single-phase



16/32 A three-phase

SOCKET STANDARDS



CL13



CL19



German



French-Belgian



British



Nema S20



Swiss T13



Swiss T23



Italian

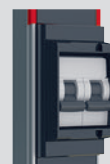


Chinese SP

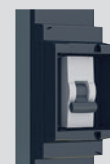
PROTECTION



Hydro-Magnetic circuit breaker



Circuit breaker holder



Circuit breaker holder with cover



Thermal circuit breaker



Fuse



Surge and overvoltage protective device

ACCESSORIES



Ammeter



Load indicator



Illuminated switch

CABLE ENTRIES



Cable entry only



With cable only



With cable and plug

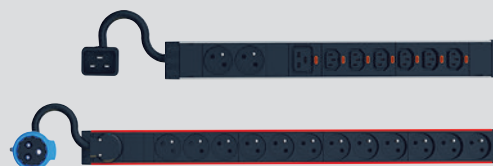


Cable gland



Rotating cable

EXAMPLES OF CONFIGURATION



**GREATER
RESPONSIVENESS
FOR ALL YOUR
CONFIGURE-TO-
ORDER PROJECTS**



**QUOTE
WITHIN
24 HRS**










**7 DAY
TURNAROUND
FOR BASIC PDUs**



**FROM RECEIPT OF
ORDER***







* WHEN ORDERING UP TO 100 PRODUCTS

A COMPREHENSIVE RANGE FOR NETWORK PROFESSIONALS

| AMMETER PDUs | | | | | |
|--|---------------------|------------------|------------|--------------|-----------|
| Socket standard | Number of sockets | Casing | Max. power | Cable length | Cat. Nos. |
|   IEC60320 | 6 | 1U 19" aluminium | 3.7 kW | cordless | 646843 |
| | 7 (6 C13 + 1 C19) | | | | 646844 |
| | 24 (20 C13 + 4 C19) | | 7.4 kW | | 646845 |
| | 24 (18 C13 + 6 C19) | Zero-U aluminium | 11 kW | 3 m | 646865 |
|  French/ Belgian | 6 | 1U 19" aluminium | 3.7 kW | 3 m | 646840 |
|  German | 6 | 1U 19" aluminium | 3.7 kW | 3 m | 646841 |
|  Italian | 6 | 1U 19" aluminium | 3.7 kW | 3 m | 646842 |

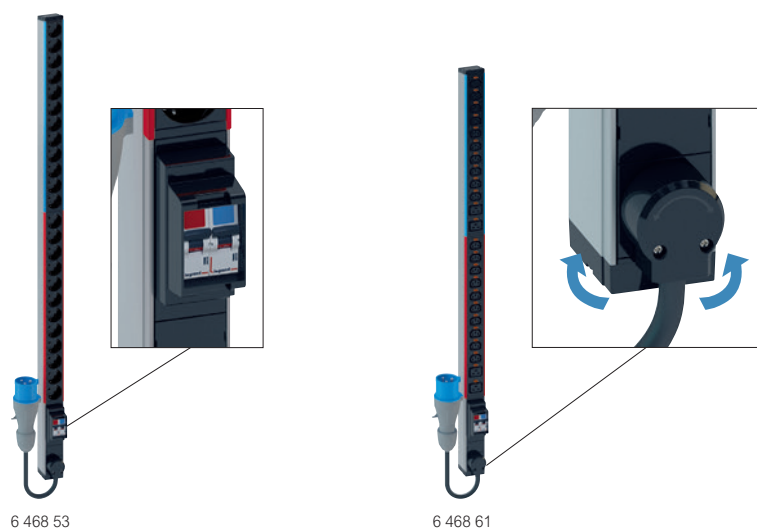
| METERED PDUs | | | | | |
|--|----------------------|---------------------|------------|--------------|-----------|
| Socket standard | Number of sockets | Casing | Max. power | Cable length | Cat. Nos. |
|   IEC60320 | 12 | 1U 19" aluminium | 3.7 kW | 3 m | 646010 |
| | 16 (12 C13 + 4 C19) | 2U 19" aluminium | 7.4 kW | | 646011 |
| | 22 (18 C13 + 4 C19) | Zero-U aluminium | 3.7 kW | | 646012 |
| | 24 (20 C13 + 4 C19) | | 7.4 kW | | 646016 |
| | 42 (36 C13 + 6 C19) | Zero-U HD aluminium | 7.4 kW | | 646013 |
| | 42 (36 C13 + 6 C19) | | 11 kW | | 646014 |
| | 48 (36 C13 + 12 C19) | | 22 kW | | 646015 |

| SWITCHED PDUs | | | | | |
|--|---------------------|------------------|------------|--------------|-----------|
| Socket standard | Number of sockets | Casing | Max. power | Cable length | Cat. Nos. |
|   IEC60320 | 8 | 1U 19" aluminium | 3.7 kW | 3 m | 646020 |
| | 16 | 2U 19" aluminium | 7.4 kW | | 646021 |
| | 24 (21 C13 + 3 C19) | Zero-U aluminium | 3.7 kW | | 646022 |
| | | | 7.4 kW | | 646023 |
| | | | 11 kW | | 646024 |
| | 16 | | 2.3 kW | | 646025 |

| BASIC PDUs | | | | | |
|--|---------------------|------------------|------------|------------------|-----------|
| Socket standard | Number of sockets | Casing | Max. power | Cable length | Cat. Nos. |
| <div></div> <div>IEC60320</div> | 6 | 1U 19" aluminium | 3.7 kW | cordless | 646807 |
| | 10 | | | | 646814 |
| | 12 | | | Zero-U aluminium | 7.4 kW |
| | 24 | 646857 | | | |
| | 8 (6 C13 + 2 C19) | 1U 19" aluminium | 3.7 kW | cordless | 646856 |
| | 24 (20 C13 + 4 C19) | Zero-U aluminium | 7.4 kW | | 3 m |
| | 24 (18 C13 + 6 C19) | | 7.4 kW | cordless | 646860 |
| | | | 11 kW | 3 m | 646870 |
| <div></div> <div>French/Belgian</div> | 4 | 1U 10" aluminium | 3.7 kW | 1 m | 646800 |
| | 6 | 1U 19" aluminium | | 3 m | 646805 |
| | | | | | 646830 |
| | | | | | 646833 |
| | | | | | 646835 |
| | 8 | 646822 | | | |
| | 9 | 646810 | | | |
| | | 646811 | | | |
| | | 646820 | | | |
| | 24 | Zero-U aluminium | 7.4 kW | cordless | 646851 |
| | | | 646850 | | |
| <div></div> <div>German</div> | 4 | 1U 10" aluminium | 3.7 kW | 1 m | 646801 |
| | 6 | 1U 19" aluminium | | 3 m | 646806 |
| | | | | | 646831 |
| | | | | | 646836 |
| | | | | | 646823 |
| | 8 | 646812 | | | |
| | 9 | 646821 | | | |
| | | 646832 | | | |
| | | 646853 | | | |
| 24 | Zero-U aluminium | 7.4 kW | cordless | 646852 | |
| <div></div> <div>English</div> | 6 | 1U 19" aluminium | 3 kW | 3 m | 646824 |
| | 8 | | | | 646813 |
| | 24 | Zero-U aluminium | 7.4 kW | cordless | 646854 |
| <div></div> <div>Italian</div> | 24 | Zero-U aluminium | 7.4 kW | 3 m | 646859 |
| <div></div> <div>Swiss</div> | 12 (T13) | 1U 19" aluminium | 3.7 kW | 3 m | 646818 |
| | 12 (T23) | | | | 646819 |

Legrand cabling system LCS³ Energy Distribution

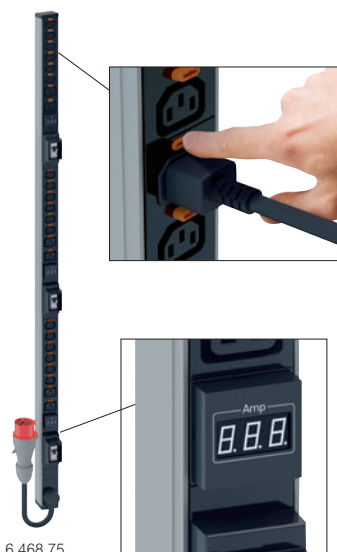
single phase Zero-U Basic Power Distribution Units (PDU)



To provide ~ electric power for IT equipment in 19" enclosures
 Single phase Zero-U PDUs for vertical mounting in the cabinet
 230 V - 50/60 Hz power supply
 PDUs with 2 circuits protected by 16 A uni + neutral MCB in a support with projecting edges to avoid accidental breakdown. Each circuit is identified by color coding. The total number of outlets is distributed equally between the 2 circuits. 2P+E outlets: C13 and C19 standard outlets, French/German/British standards outlets equipped with blanks, French/German standards outlets inclined at 55°
 330° rotating cable input for a perfect orientation of the cable and no interference in the cabinet
 C13 and C19 standard outlets are equipped with cord locking system to avoid any accidental disconnection. Universal solution compatible with all the cords (C14 plugs for C13 and C20 plugs for C19)
 Delivered with 2 sets of metallic mounting brackets: button brackets (for quick fixing and variable pitch) and standard brackets (for screw fixing)
 Black modules (outlets and functions)
 Aluminium profile

| Pack | Cat.Nos | PDU Basic | Pack | Cat.Nos | PDU Basic with ammeter |
|------|----------|--|------|----------|--|
| 1 | 6 468 52 | German standard 24 outlets Connection on terminal block up to 6 mm ² | | | Measure consumption to provide better installation management: balancing circuits, displaying available capacity, preventing overloads and power failures 1 ammeter per circuit Rotating display to ensure a perfect reading whatever the PDU mounting direction is (horizontal, vertical with top or bottom power supply input) |
| 1 | 6 468 53 | British standard 24 outlets 3 m power supply cord with IEC 60309 32 A 2P+E plug | | | |
| 1 | 6 468 54 | French standard 24 outlets Connection on terminal block up to 6 mm ² | | | |
| 1 | 6 468 50 | Italian standard 24 outlets 3 m power supply cord with IEC 60309 32 A 2P+E plug | | | |
| 1 | 6 468 51 | IEC 60320 standard 24 C13 outlets with cord locking system Connection on terminal block up to 6 mm ² | | | |
| 1 | 6 468 59 | IEC 60320 standard 24 C13 outlets with cord locking system 3 m power supply cord with IEC 60309 32 A 2P+E plug | | | |
| 1 | 6 468 56 | IEC 60320 standard 20 C13 outlets + 4 C19 outlets with cord locking system. Connection on terminal block up to 6 mm ² | 1 | 6 468 65 | IEC 60320 standard 20 C13 outlets + 4 C19 outlets with cord locking system. Connection on terminal block up to 6 mm ² |
| 1 | 6 468 57 | IEC 60320 standard 20 C13 outlets + 4 C19 outlets with cord locking system. 3 m power supply cord with IEC 60309 32 A 2P+E plug | | | |
| 1 | 6 468 60 | | | | |
| 1 | 6 468 61 | | | | |

Legrand cabling system LCS³ Energy Distribution - three phases Zero-U Basic PDUs



To provide ~ electric power for IT equipment in 19" enclosures
Three phases Zero-U PDUs for vertical mounting in the cabinet
400 V - 50/60 Hz power supply
Each circuit is protected by 16 A single pole MCB in a support with projecting edges to avoid accidental breakdown. 1 circuit per phase, each with 6 IEC 60320 C13 outlets and 2 IEC 60320 C19 outlets
330° rotating cable input for a perfect orientation of the cable and no interference in the cabinet
C13 and C19 standard outlets are equipped with cord locking system to avoid any accidental disconnection. Universal solution compatible with all the cords (C14 plugs for C13 and C20 plugs for C19)
Delivered with 2 sets of metallic mounting brackets: button brackets (for quick fixing and variable pitch) and standard brackets (for screw fixing)
Black modules (outlets and functions)
Aluminium profile

| Pack | Cat.Nos | PDU Basic |
|------|----------|--|
| 1 | 6 468 70 | IEC 60320 standard 18 C13 outlets + 6 C19 outlets with cord locking system. 3 m power supply cord with IEC 60309 16 A 3P+N+E plug |
| 1 | 6 468 75 | PDU Basic with ammeter Measure consumption to provide better installation management: balancing circuits, displaying available capacity, preventing overloads and power failures 1 ammeter per circuit Rotating display to ensure a perfect reading whatever the PDU mounting direction is (horizontal, vertical with top or bottom power supply input) IEC 60320 standard 18 C13 outlets + 6 C19 outlets with cord locking system. 3 m power supply cord with IEC 60309 16 A 3P+N+E plug |

CORD LOCKING SYSTEM

Innovation at the heart of PDUs to prevent accidental disconnection

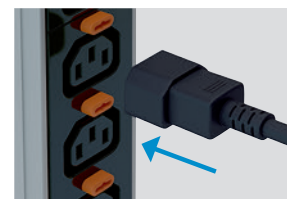
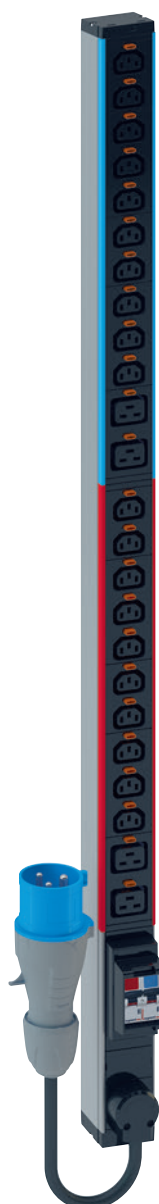
A major addition to the range and exclusive to Legrand, C13 and C19 outlets have a power supply cord locking system which prevents accidental disconnection and guarantees absolute safety!



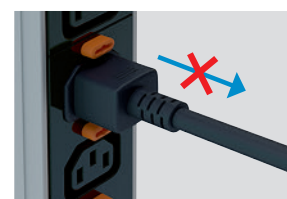
An innovative technical solution: very easy to identify thanks to the orange buttons next to each outlet



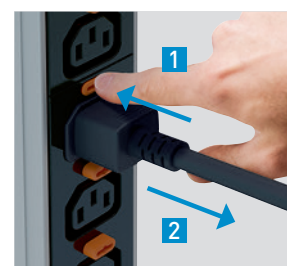
A universal system: takes all cords for standard C13 and C19 outlets



CONNECTION



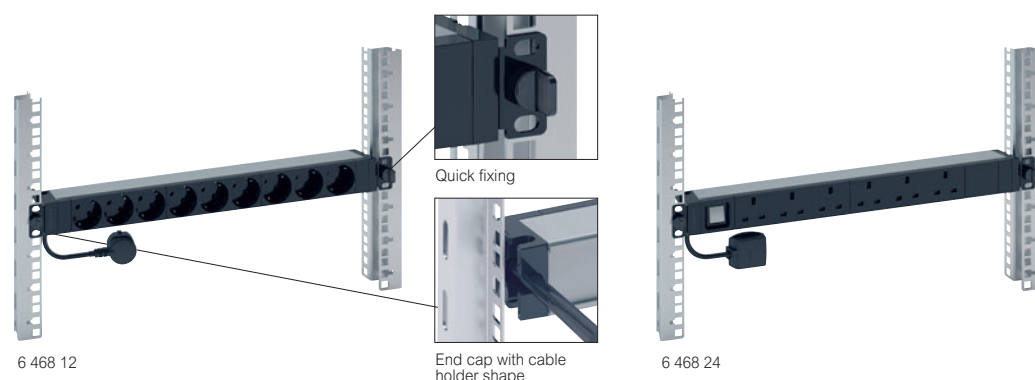
AUTO LOCKING



UNLOCKING

Legrand cabling system LCS³ Energy Distribution

Horizontal (1U/2U) Basic Power Distribution Units (PDU)

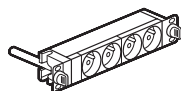


To provide ~ electric power for IT equipment in enclosure. 230 V - 50/60 Hz power supply. 1U aluminium profile. End cap with metallic brackets and cable holder shape. Quick fixing (no screws) on 19" fixing centers. Can also be installed vertically by reverting the brackets (no screws)

- 2P+E outlets:
- C13 and C19 standard outlets are equipped with cord locking system to avoid any accidental disconnection. Universal solution compatible with all the cords (C14 plugs for C13 and C20 plugs for C19).
 - French, German and British standard outlets are equipped with blanks
 - French and German standard outlets are inclined at 55°
- Black modules (outlets and functions)

| Pack | Cat.Nos | 19" - PDU Basic |
|------|----------|---|
| | | German standard |
| 1 | 6 468 06 | 3 m power supply cord with 16 A 2P+E French/German plug |
| 1 | 6 468 12 | 6 outlets |
| | | British standard |
| 1 | 6 468 13 | 3 m power supply cord with 13 A 2P+E British plug |
| | | 8 outlets |
| | | French standard |
| 1 | 6 468 05 | 3 m power supply cord with 16 A 2P+E French/German plug |
| 1 | 6 468 10 | 6 outlets |
| 1 | 6 468 11 | 9 outlets |
| | | 9 tamperproof red outlets |
| | | Swiss standard |
| 1 | 6 468 18 | 3 m power supply cord with 16 A 2P+E Swiss plug |
| 1 | 6 468 19 | 12 T13 |
| | | 12 T23 |
| | | IEC 60320 standard |
| | | Connection on terminal block (except Cat.No 6 468 15) |
| 1 | 6 468 14 | 10 C13 outlets with cord locking system |
| 1 | 6 468 15 | 12 C13 outlets with cord locking system |
| 1 | 6 468 09 | 3 m power supply cord with 16 A IEC 60309 2P+E |
| | | 6 C13 outlets + 2 C19 outlets with cord locking system |
| 1 | 6 468 07 | 6 C19 outlets with cord locking system |

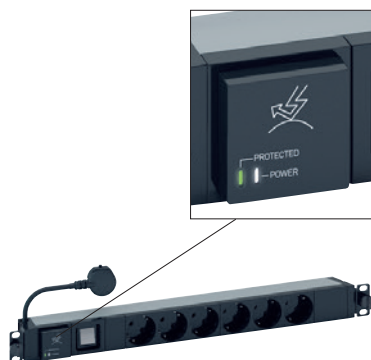
| | | |
|---|----------|---|
| | | 10" - PDU Basic |
| | | 1 m power supply cord 2P+E French/German plug |
| 1 | 6 468 01 | 4 x 2P+E outlets |
| 1 | 6 468 00 | German standard |
| | | French standard |



| Pack | Cat.Nos | 19" - PDU Basic with power indicator or luminous switch |
|------|----------|--|
| | | LED indicator: signals whether the PDU is supplied with power or not |
| | | LED indicator switch: powers on/off the PDU |
| | | German standard |
| | | 3 m power supply cord with 16 A 2P+E French/German plug |
| 1 | 6 468 21 | 9 outlets and 1 power indicator |
| 1 | 6 468 23 | 8 outlets and 1 luminous switch |
| | | British standard |
| 1 | 6 468 24 | 3 m power supply cord with 13 A 2P+E British plug |
| | | 6 outlets and 1 luminous switch |
| | | French standard |
| 1 | 6 468 20 | 3 m power supply cord with 16 A 2P+E French/German plug |
| 1 | 6 468 22 | 9 outlets and 1 power indicator |
| | | 8 outlets and 1 luminous switch |

Legrand cabling system LCS³ Energy Distribution

1U Basic Power Distribution Units (PDU)



6 468 36

To provide ~ electric power for IT equipment in enclosures. 230 V - 50/60 Hz power supply. 1U aluminium profile. End cap with metallic brackets and cable holder shape. Quick fixing (no screws) on 19" fixing centers. Can also be installed vertically by reverting the brackets (no screws) 2P+E outlets:

- C13 and C19 standard outlets are equipped with cord locking system to avoid any accidental disconnection. Universal solution compatible with all the cords (C14 plugs for C13 and C20 plugs for C19).
 - French, German and British standard outlets are equipped with blanks
 - French and German standard outlets are inclined at 55°
- Black modules (outlets and functions)

| Pack | Cat.Nos | 19" - Basic PDU with protection devices |
|------|----------|--|
| 1 | 6 468 31 | MCB and RCBO support with projecting edges to avoid accidental breakdown |
| 1 | 6 468 32 | 3 m power supply cord with 16 A 2P+E French/German plug |
| | | German standard |
| 1 | 6 468 31 | 6 outlets and a 16 A single pole Micro Circuit Breaker |
| 1 | 6 468 32 | 9 outlets and a 16 A single pole Micro Circuit Breaker, 2U height |
| | | French standard |
| 1 | 6 468 30 | 6 outlets and a 16 A single pole Micro Circuit Breaker |
| 1 | 6 468 33 | 6 outlets and a 16 A 30 mA Residual-current Circuit |
| | | 19" - Basic PDU with surge protection |
| | | Protect against mains overvoltages while keeping outlets energised |
| | | With light indicators: |
| | | - one LED (white) gives information whether the PDU is supplied with power or not |
| | | - one LED (green) indicates when surge protection module is efficient or must be replaced |
| | | Equipped with hotswappable surge protection module Cat.No 6 468 97: even when the module is being replaced, the PDU and its outlets are still powered on |
| | | With switch |
| | | 3 m power supply cord with 16 A 2P+E French/German plug |
| 1 | 6 468 36 | 6 outlets - German standard |
| 1 | 6 468 35 | 6 outlets - French standard |

| Pack | Cat.Nos | 19" - Basic PDU with ammeter |
|------|----------|---|
| | | Measure consumption to provide better installation management: balancing circuits, displaying available capacity, preventing overloads and power failures |
| | | Measure total PDU current |
| | | Rotating display to ensure a perfect reading whatever the PDU mounting direction is (horizontal, vertical with top or bottom power supply input) |
| | | German standard |
| | | 3 m power supply cord with 16 A 2P+E French/German plug |
| 1 | 6 468 41 | 6 outlets |
| | | French standard |
| 1 | 6 468 40 | 3 m power supply cord with 2P+E French/German plug |
| 1 | 6 468 42 | 6 outlets |
| | | Italian standard |
| | | 6 outlets |
| | | IEC 60320 standard |
| | | With integrated universal plug locking system |
| | | Connection on terminal block |
| 1 | 6 468 43 | 6 C13 outlets with cord locking system |
| 1 | 6 468 45 | 6 C13 outlets + 1 C19 outlet with cord locking system |
| 1 | 6 468 44 | 6 C19 outlets with cord locking system |

Legrand cabling system LCS³ Energy Distribution

Intelligent metered and switched PDUs



Power distribution units with metering at inlet level and circuit breaker level
Possibility of environmental monitoring through one of the optional external sensors (temperature, humidity...)

| Pack | Cat.Nos | 19" - intelligent metered PDUs |
|------|----------|---|
| 1 | 6 460 10 | IEC 60320 standard 12 C13 outlets, with 3 m power supply cord with C20 plug |
| 1 | 6 460 11 | 12 C13 and 4 C19 outlets, with 3 m power supply cord with IEC60309 32 A 2P+E plug |
| | | 19" - intelligent metered and switched PDUs |
| | | IEC 60320 standard |
| 1 | 6 460 20 | 8 C13 outlets with cord locking system and switch 3 m power supply cord with C14 10/16 A 2P+E plug |
| 1 | 6 460 21 | 16 C13 outlets with cord locking system and switch 3 m power supply cord with CEI 60309 32 A 2P+E plug |
| | | Vertical Zero-U - intelligent metered PDUs |
| 1 | 6 460 12 | IEC 60320 standard 18 C13 and 4 C19 outlets, with 3 m power supply cord with IEC60309 16 A 2P+E plug |
| 1 | 6 460 13 | 36 C13 and 6 C19 outlets, with 3 m power supply cord with IEC60309 32 A 2P+E plug |
| 1 | 6 460 14 | 36 C13 and 6 C19 outlets, with 3 m power supply cord with 3 phase IEC60309 16 A 3P+N+E plug |
| 1 | 6 460 15 | 30 C13 and 12 C19 outlets, with 3 m power supply cord with 3 phase IEC60309 32 A 3P+N+E plug |
| 1 | 6 460 16 | 20 C13 and 4 C19 outlets with 3 m power supply cord with IEC60309 32 A 2P+E plug |

| Pack | Cat.Nos | Vertical Zero-U - intelligent metered and switched PDUs |
|------|----------|---|
| | | IEC 60320 standard |
| 1 | 6 460 25 | 16 C13 outlets with cord locking system. 3 m power supply cord with C14 10 A 2P+E plug |
| 1 | 6 460 22 | 21 C13 outlets and 3 C19 outlets with cord locking system. 3 m power supply cord with IEC 60320 16 A 2P+E plug |
| 1 | 6 460 23 | 21 C13 outlets and 3 C19 outlets with cord locking system. 3 m power supply cord with IEC 60320 32 A 2P+E plug |
| 1 | 6 460 24 | 21 C13 outlets and 3 C19 outlets with cord locking system. 3 m power supply cord with IEC 60309 16 A 3P+N+E plug |
| | | Sensors for metered PDU accessories |
| 1 | 6 460 00 | Temperature sensor |
| 1 | 6 460 01 | Temperature / humidity sensor |
| 1 | 6 460 02 | Dual contact closure sensor |

Legrand cabling system LCS³ Energy Distribution

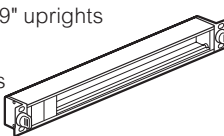

PDU's

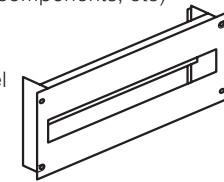
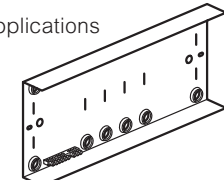


6 468 90



0 465 46 + 0 465 47

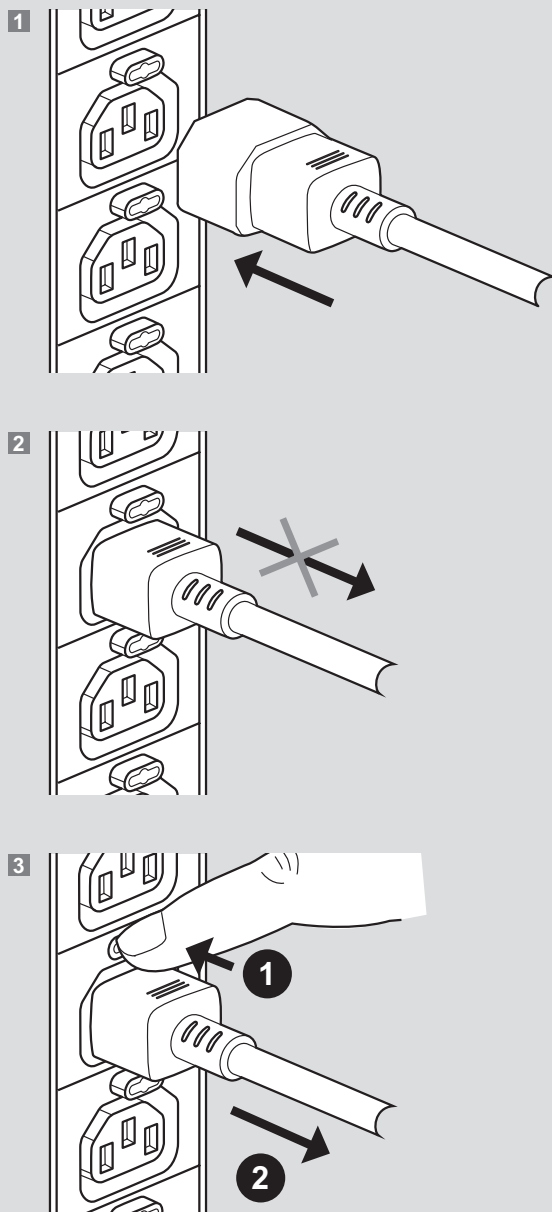
| Pack | Cat.Nos | PDU to be equipped |
|------------------------|----------|--|
| 1 | 6 468 99 | For self assembly with Mosaic wiring device modules Quick fixing (no screws) on 19" uprights Aluminium profile PDU 19" |
| 1 | 6 468 98 | Capacity: 16 Mosaic modules PDU 10" Capacity: 8 Mosaic modules |
| | |  |
| PDU accessories | | |
| | | Locking caps To block the use of an outlet. A key is necessary to remove the cap and free the access Light grey |
| 1 | 6 468 90 | Set of 6 locking caps for French, Italian and German standard outlet + 1 key |
| 1 | 6 468 92 | Set of 6 locking caps for British standard outlet + 1 key |
| 1 | 6 468 94 | Set of 6 locking caps for C13 standard outlet + 1 key |
| 1 | 6 468 95 | Set of 6 locking caps for C19 standard outlet + 1 key |
| 1 | 6 468 97 | Surge protection module To replace used module on PDU With light indicators: - one LED (white): signals whether the PDU is supplied with power or not - one LED (green/red) indicates when surge protection module is active or must be replaced Hotswappable surge protection module: even when the module is being replaced, the PDU and its outlets are still powered on Surge protection replacement module |
| | |  |

| Pack | Cat.Nos | Multi-applications DIN rail |
|------|----------|---|
| 1 | 0 465 46 | For mounting modular devices (circuit breakers, Legrand multimedia network components, etc) Capacity: 24 modules Height 4 U Screw fixing on 19" uprights DIN profile rail with front panel Supplied with blanking plates 24 modules Black RAL 9005 |
| 1 | 0 465 47 | Rear cover To be used for high current applications (greater than 50 V) To be associated with DIN profile rail Cat.No 0 465 46 Ensures IP XXB Supplied with terminal block (8 + 1 connections) |
| | |   |

Energy distribution

cord locking system

■ Cord locking system

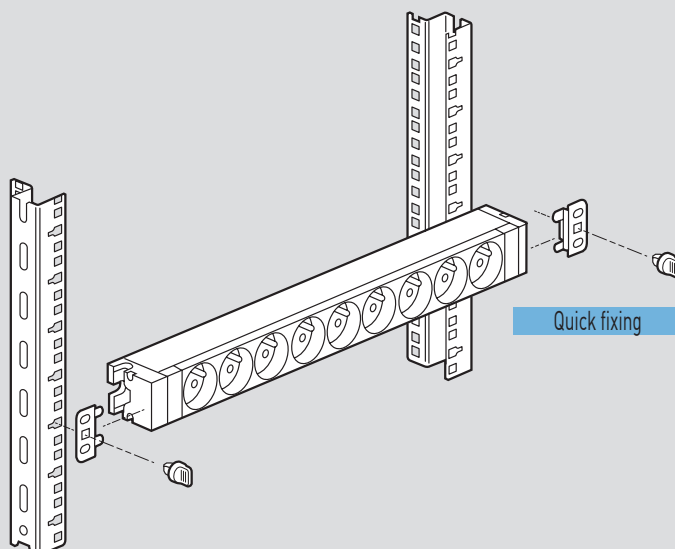


Energy distribution

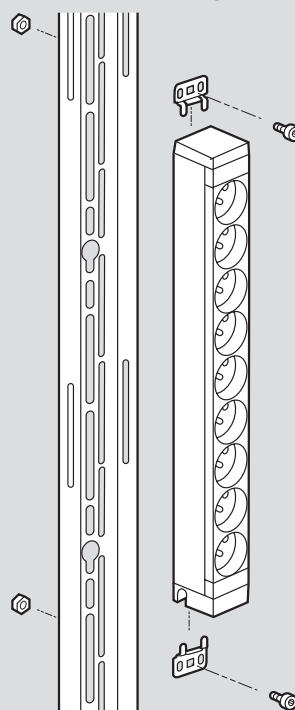
19" 1U PDU mounting

■ Horizontal mounting in Legrand 19" cabinets

Can be mounted in all Legrand 19" cabinets except for 19" HD racks which require the use of equipment screws Cat.No 0 464 23



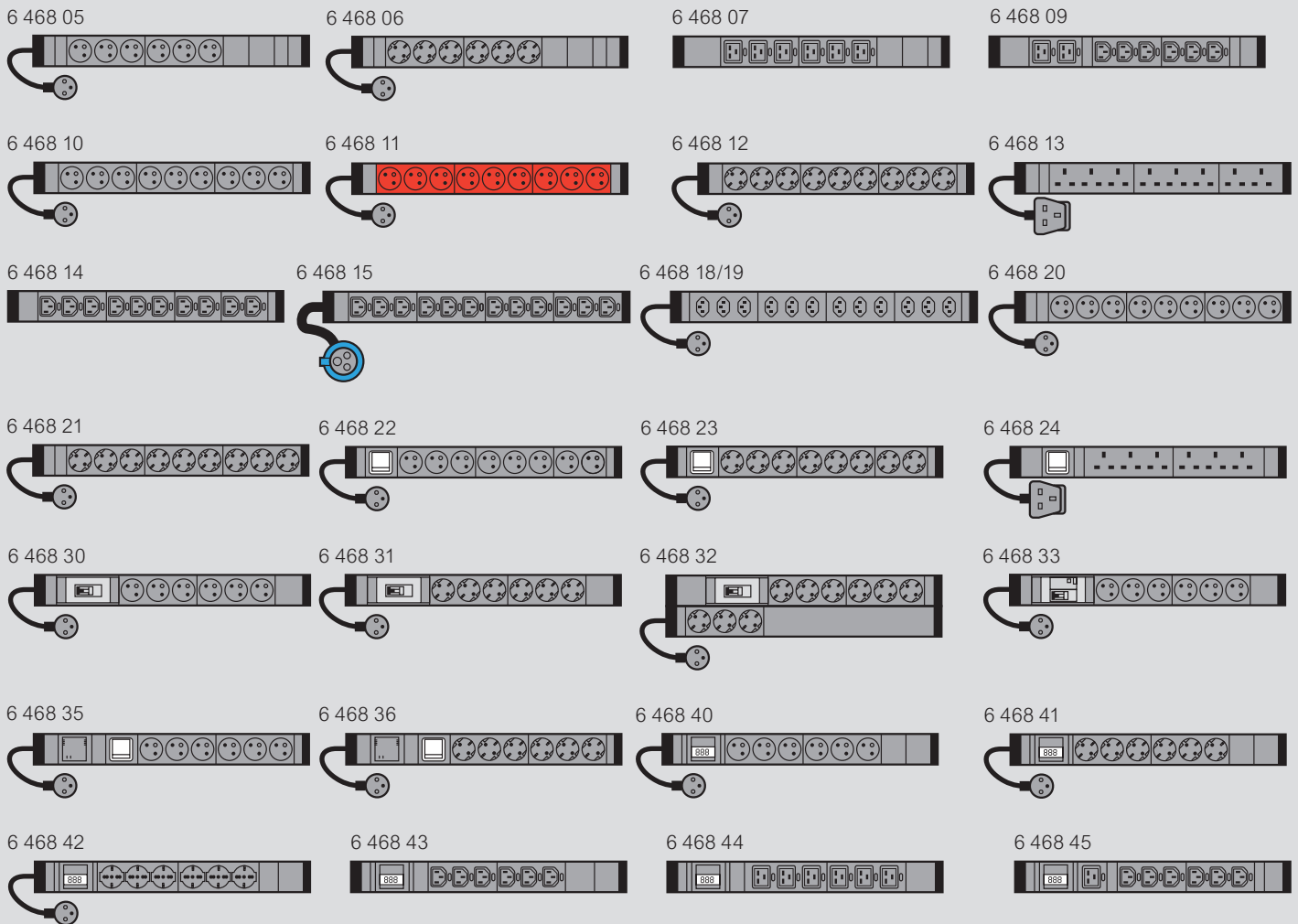
■ Vertical mounting in freestanding cabinets with support



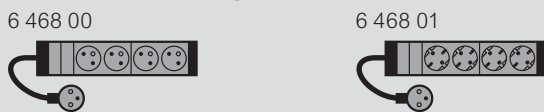
Energy distribution

19" 1U PDU mounting

19" 1U PDU configurations



10" 1U PDU configurations

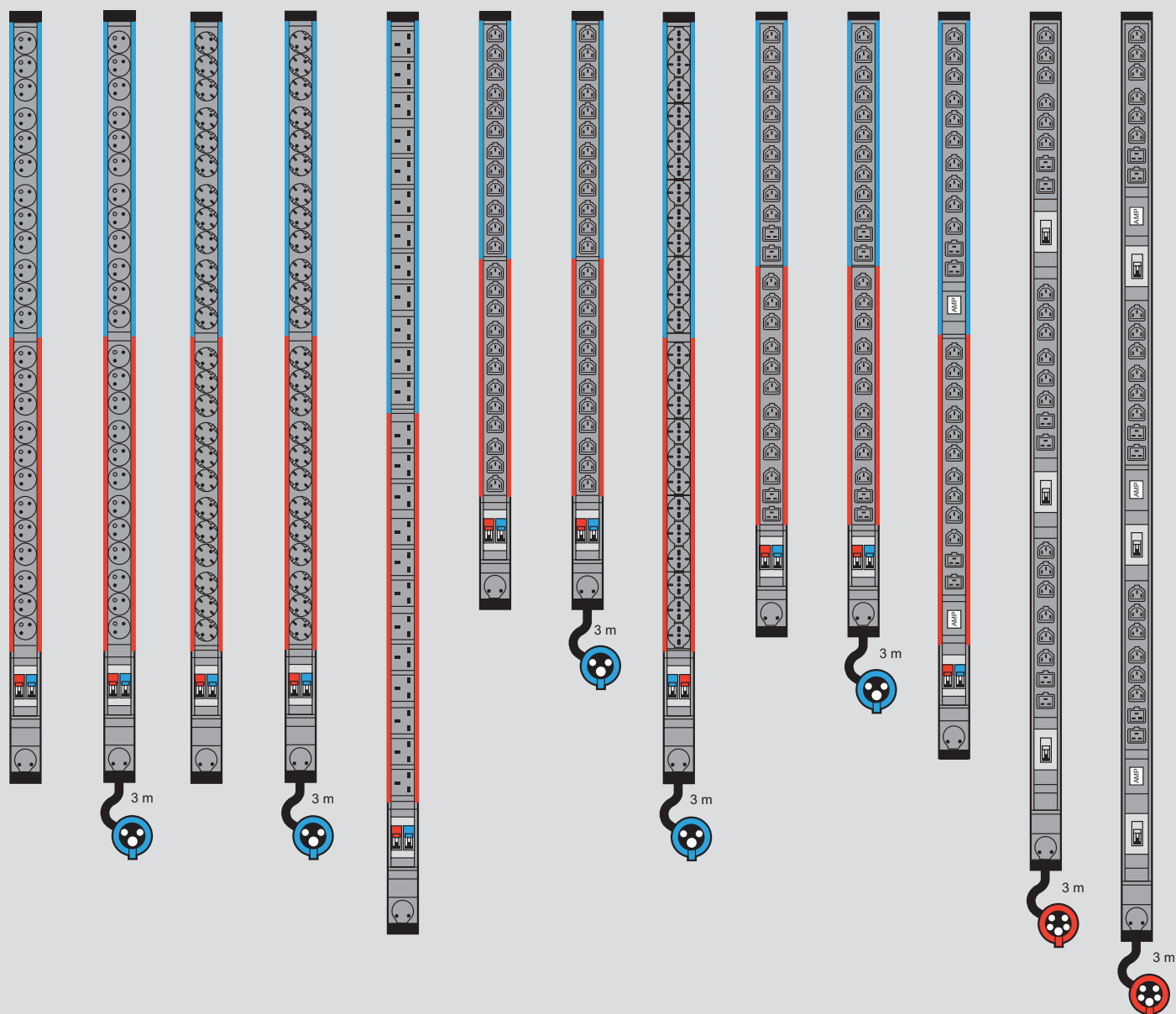


Energy distribution

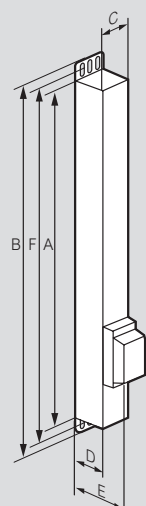
Zero-U PDU

Zero-U PDU configurations

6 468 50 6 468 51 6 468 52 6 468 53 6 468 54 6 468 56 6 468 57 6 468 59 6 468 60 6 468 61 6 468 65 6 468 70 6 468 75



Zero-U PDU sizes (mm)



| Cat.Nos | Height | | Width | Depth | | Fixing centres (mini-maxi) | |
|----------|--------|------------------|-------|-------|------------------|----------------------------|------|
| | A | B ⁽¹⁾ | | D | E ⁽²⁾ | F ⁽¹⁾ | |
| 6 468 50 | 1247 | 1291 | 52 | 52.5 | 87 | 1259 | 1279 |
| 6 468 51 | 1247 | 1291 | 52 | 52.5 | 87 | 1259 | 1279 |
| 6 468 52 | 1247 | 1291 | 52 | 52.5 | 87 | 1259 | 1279 |
| 6 468 53 | 1247 | 1291 | 52 | 52.5 | 87 | 1259 | 1279 |
| 6 468 54 | 1463 | 1507 | 52 | 52.5 | 87 | 1475 | 1495 |
| 6 468 56 | 1031 | 1075 | 52 | 52.5 | 87 | 1043 | 1063 |
| 6 468 57 | 1031 | 1075 | 52 | 52.5 | 87 | 1043 | 1063 |
| 6 468 59 | 1319 | 1363 | 52 | 52.5 | 87 | 1331 | 1351 |
| 6 468 60 | 1067 | 1111 | 52 | 52.5 | 87 | 1079 | 1099 |
| 6 468 61 | 1067 | 1111 | 52 | 52.5 | 87 | 1079 | 1099 |
| 6 468 65 | 1157 | 1201 | 52 | 52.5 | 87 | 1169 | 1189 |
| 6 468 70 | 1340 | 1384 | 52 | 52.5 | 87 | 1352 | 1372 |
| 6 468 75 | 1475 | 1519 | 52 | 52.5 | 87 | 1487 | 1507 |

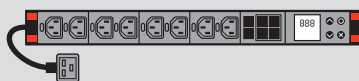
1 : Overall height with standard brackets (screw fixing)
2 : Overall depth at the circuit breaker slot

Energy distribution

19" and Zero-U Intelligent PDUs

19" intelligent PDUs

6 460 10



6 460 11



6 460 20



6 460 21



Zero-U intelligent PDUs

6 460 12



6 460 13



6 460 14



6 460 15



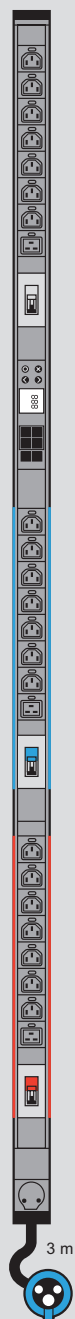
6 460 16



6 460 22



6 460 23



6 460 24



6 460 25



Zero-U intelligent PDUs sizes (mm)

| Cat.Nos | Height | | Width | Depth | | | Fixing centres (mini-maxi) | |
|----------|--------|------------------|-------|-------|----|------------------|----------------------------|------|
| | A | B ⁽¹⁾ | | C | D | E ⁽²⁾ | F ⁽¹⁾ | |
| 6 460 12 | 1298 | 1342 | 52 | 52.5 | - | - | 1310 | 1330 |
| 6 460 13 | 1539 | 1583 | 59 | 52.5 | 68 | - | 1551 | 1571 |
| 6 460 14 | 1298 | 1342 | 59 | 52.5 | - | - | 1310 | 1330 |
| 6 460 15 | 1780 | 1824 | 59 | 52.5 | 68 | - | 1792 | 1812 |
| 6 460 16 | 1475 | 1519 | 52 | 52.5 | 68 | - | 1487 | 1507 |

| Cat.Nos | Height | | Width | Depth | | | Fixing centres (mini-maxi) | |
|----------|--------|------------------|-------|-------|----|------------------|----------------------------|------|
| | A | B ⁽¹⁾ | | C | D | E ⁽²⁾ | F ⁽¹⁾ | |
| 6 460 22 | 1539 | 1583 | 52 | 52.5 | - | - | 1551 | 1571 |
| 6 460 23 | 1780 | 1824 | 52 | 52.5 | 68 | - | 1792 | 1812 |
| 6 460 24 | 1539 | 1583 | 52 | 52.5 | - | - | 1551 | 1571 |
| 6 460 25 | 1298 | 1342 | 52 | 52.5 | - | - | 1310 | 1330 |

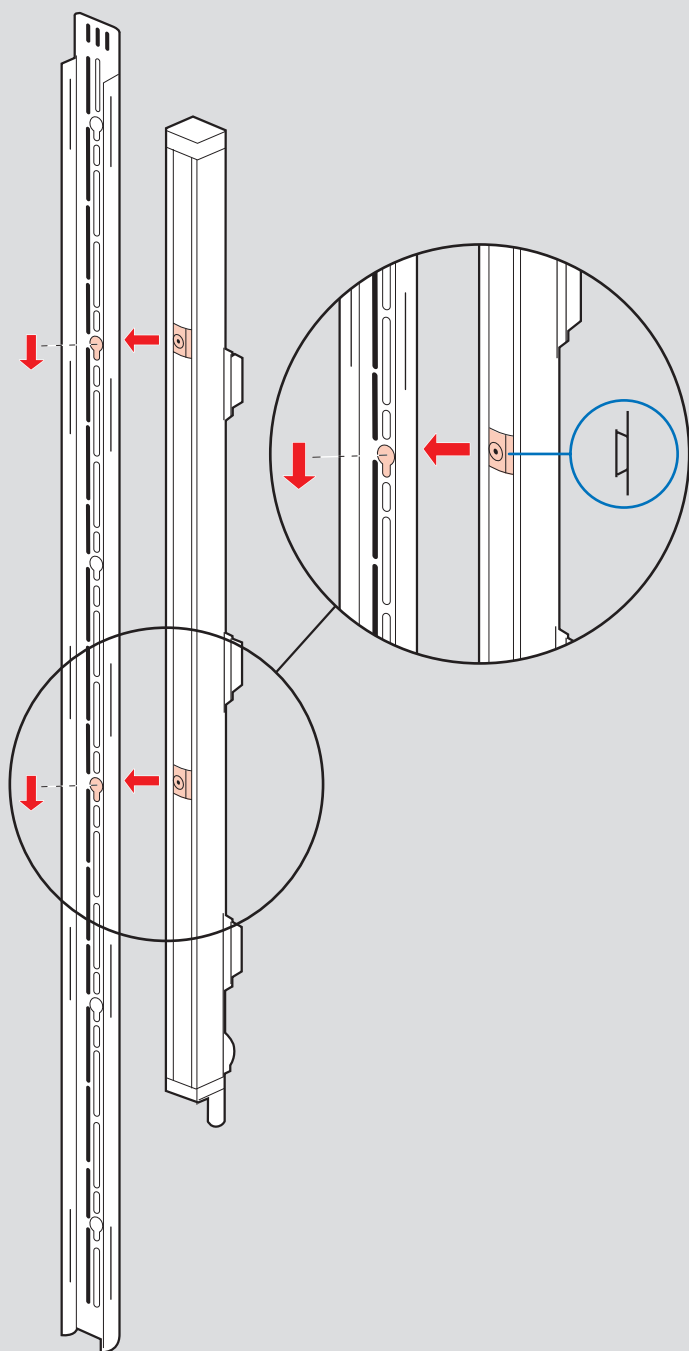
1 : Overall height with standard brackets (screw fixing) / 2 : Overall depth at the circuit breaker slot

Energy distribution

Zero-U PDU mounting in LCS³ cabinets

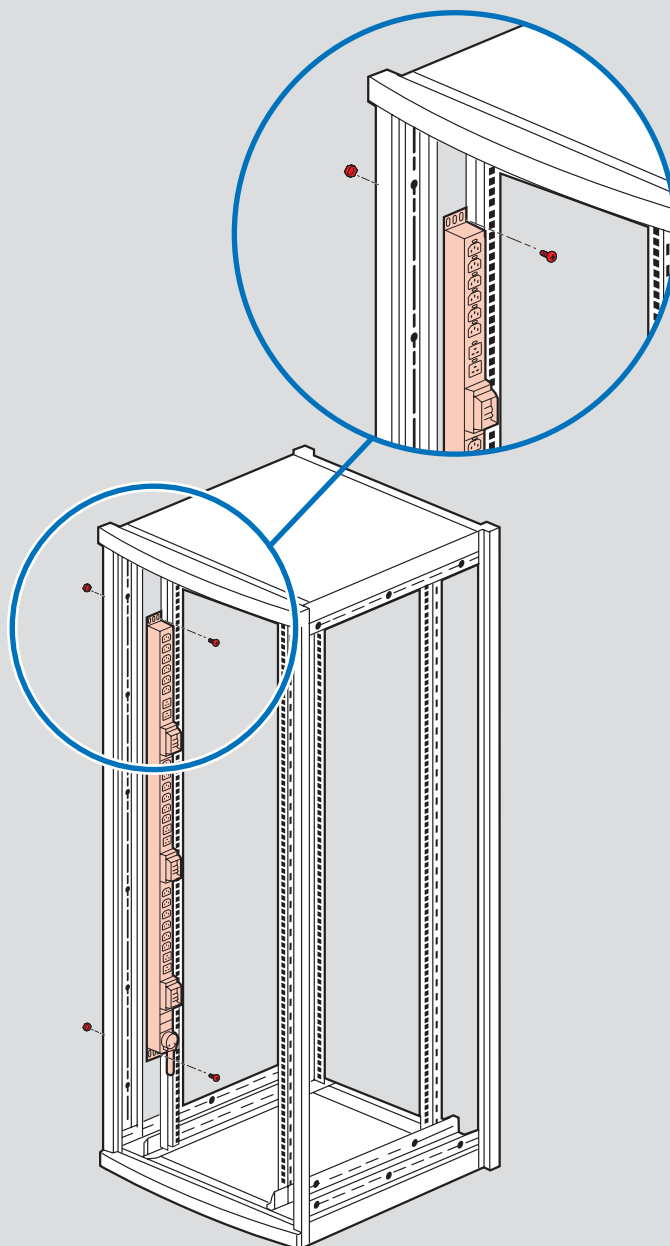
■ Solution with button brackets

Quick fixing without screws with support



■ Solution with standard brackets

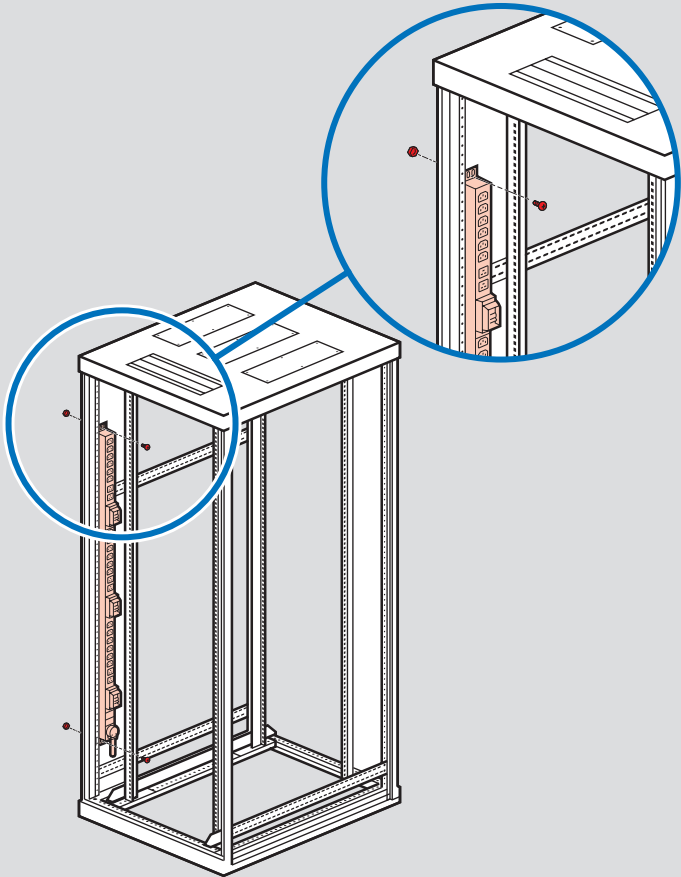
Screw fixing with support



Catalogue number index

Solution with LCS³ brackets

Screw fixing with support



| Cat.Nos | Page N° | Pack |
|-----------------|---------|------|
| 0 465 00 | | |
| 0 465 46 | 31 | 1 |
| 47 | - | 1 |
| 6 460 00 | | |
| 6 460 00 | 30 | 1 |
| 01 | - | 1 |
| 02 | - | 1 |
| 10 | - | 1 |
| 11 | - | 1 |
| 12 | - | 1 |
| 13 | - | 1 |
| 14 | - | 1 |
| 15 | - | 1 |
| 16 | - | 1 |
| 20 | - | 1 |
| 21 | - | 1 |
| 22 | - | 1 |
| 23 | - | 1 |
| 24 | - | 1 |
| 25 | - | 1 |
| 6 468 00 | | |
| 6 468 00 | 28 | 1 |
| 01 | - | 1 |
| 05 | - | 1 |
| 06 | - | 1 |
| 07 | - | 1 |
| 09 | - | 1 |
| 10 | - | 1 |
| 11 | - | 1 |
| 12 | - | 1 |
| 13 | - | 1 |
| 14 | - | 1 |
| 15 | - | 1 |
| 18 | - | 1 |
| 19 | - | 1 |

| Cat.Nos | Page N° | Pack |
|----------|---------|------|
| 6 468 20 | 28 | 1 |
| 21 | - | 1 |
| 22 | - | 1 |
| 23 | - | 1 |
| 24 | - | 1 |
| 30 | - | 1 |
| 31 | - | 1 |
| 32 | - | 1 |
| 33 | - | 1 |
| 35 | - | 1 |
| 36 | - | 1 |
| 40 | 29 | 1 |
| 41 | - | 1 |
| 42 | - | 1 |
| 43 | - | 1 |
| 44 | - | 1 |
| 45 | - | 1 |
| 50 | 26 | 1 |
| 51 | - | 1 |
| 52 | - | 1 |
| 53 | - | 1 |
| 54 | - | 1 |
| 56 | - | 1 |
| 57 | - | 1 |
| 59 | - | 1 |
| 60 | - | 1 |
| 61 | - | 1 |
| 65 | - | 1 |
| 70 | 27 | 1 |
| 75 | - | 1 |
| 90 | 31 | 1 |
| 92 | - | 1 |
| 94 | - | 1 |
| 95 | - | 1 |
| 97 | - | 1 |
| 98 | - | 1 |
| 99 | - | 1 |

Iraq

Tel: (+974) 50 81 92 89

Jordan

Al Madina Al Monawara Street,
Tlaa' AL Ali, Building no. 263 - Rana
Center - 3rd floor - Offices 301 &
302 Amman - Jordan
Tel: (+962) 65537586
Fax: (+962) 65537589

Kuwait

Shuwaikh Safat 13002
P.O. Box 177
KUWAIT
Tel: (+965) 9726 2699
Fax: (+965) 2482 4754

Lebanon

Achrafieh 5585 Bldg., 6th floor
P. Gemayel Avenue - Aadlieh
Beirut
Tel: (+961) 1 422 166
Fax: (+961) 1 422 167

Oman

Tel: (+968) 91397978

Pakistan

Tel: (+92) 332 374 9443

Saudi Arabia

Riyadh (Central Region Office)
Al-Sulaiman Square Building, 2nd Floor
Office 16, Mousa Bin Nusair Street
P.O. Box 325099
Tel: (+966) 11 466 6640
Fax: (+966) 11 279 01 17

Al Khobar (Eastern Region Office)
Al-Khobar Mall
2nd Floor, Office 362
P.O. Box 927
Al Khobar 31952
Tel: (+966) 3 887 89 50
Fax: (+966) 3 887 89 52






Jeddah (Western Region Office-Head Office)
Al-Reem Business Center, 2nd Floor
Al-Rawdah District
P.O.Box: 51712
Jeddah 21553
Tel: (+966) 2 261 9696
Fax: (+966) 2 261 9797

United Arab Emirates

Legrand Middle East Headquarters
Wing C, Office 701
Dubai Silicon Oasis
P.O. Box 341068
Dubai, United Arab Emirates
Tel: (+971) 4 3821 821
Fax: (+971) 4 3821 822

GemNet Gulf L.L.C.
(A group company of Legrand)
Street No. 26,
Al Quoz Industrial Area 4,
P.O. Box 52914,
Dubai, United Arab Emirates
Tel: (+971) 4 341 9920
Fax: (+971) 4 341 9940

**FOLLOW US ON**

-  www.legrand.ae
-  www.youtube.com/legrandgulfcountries
-  www.facebook.com/legrandgulfcountries
-  www.twitter.com/legrandgulf
-  www.instagram.com/legrandgulfcountries
-  www.linkedin.com/company/legrand

**MIDDLE EAST HEADQUARTERS**

Dubai Silicon Oasis
Wing C - Office 701
P.O. Box: 341068
Dubai - U.A.E.
Tel: (+971) 4 3821 821
Fax: (+971) 4 3821 822