



SCL

SIMPLEX

CABLES (UK) LTD.

Designed for sealing and retention



Email: info@simplexcables.com
Web: www.simplexcables.com

ISO 9001

BUREAU VERITAS
Certification



The Company

The UK-based Caparo Group, founded by The Rt. Hon. Lord Paul of Marylebone, includes a global network of businesses under the Caparo name. Caparo is a diversified operation comprised of businesses that supply steel, electrical and engineering products to modern industries. Our customers are the biggest names in electrical, automotive, construction, aerospace, steel conversion and distribution, engineering and medical.










Simplex is a registered trademark owned by Simplex Cables (UK) Ltd. (SCL) is registered in The Trade Mark Registry in Great Britain and registered trademarks of Caparo, the UK arm of the Caparo Group.

Simplex is a specialized and independent electrical component manufacturer of cable glands, Lugs and fittings & accessories. As an ISO certified company conforming to the international standards of quality and have better output yielding capacity resulting from our skillful workmanship, exquisite technique, good quality guarantee and excellent service.

Today, we remain committed to growing and investing in our businesses...building on our far-reaching heritage and culture.

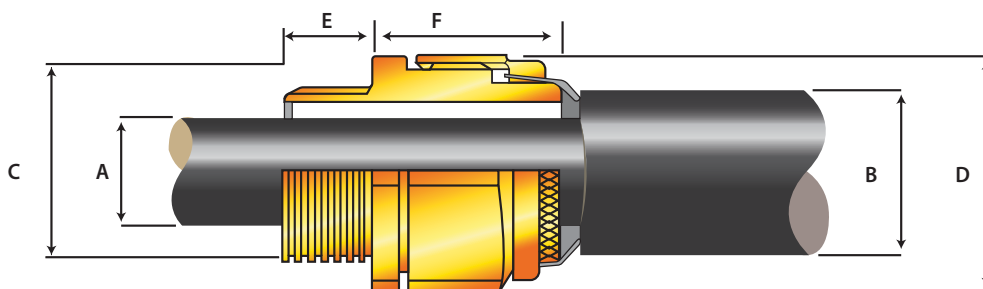


INDEX

SR. NO	PRODUCT DESCRIPTION		PAGE NO.	SR. NO	PRODUCT DESCRIPTION		PAGE NO.
1	BW CABLE GLAND		2	10	SHROUDS (PVC/LSHF)		10
2	CW CABLE GLAND		3	11	INSULATED CABLE CONNECTORS		11 12
3	A2 CABLE GLAND		4	12	CABLE LUGS		13 14 15
4	E1W CABLE GLAND		5	13	LSOH SINGLE BOLD CABLE CLEAT		16
5	CW ALUMINUM CABLE GLAND		6	14	LSOH DOUBLE BOLD CABLE CLEAT		17
6	PG NYLON CABLE GLAND		7	15	ALUMINUM DOUBLE BOLT aCABLE CLEAT		18
7	PG METAL CABLE GLAND		8	16	ALUMINUM TREFOIL CABLE CLEAT		19
8	FIRE RATED CABLE GLAND		9	17	BI-METALLIC LUGS		20
9	WIPING GLAND		10				

BW CABLE GLAND

- » BW type brass gland, for indoor use with all kind of Steel Wire Armoured (SWA) cable and Aluminium Wire Armoured (AWA) cable.
- » Provides mechanical cable retention & electrical continuity via armoured wire termination.
- » Permanently crimped, low impedance earth termination.
- » Cable gland complete kit includes: brass gland, locknut, earth tag and shroud.
- » Sizes M25 and lower, will contain two kits and sizes M32 and above will include one kit.



SPECIFICATIONS

Threading Standard	Metric
Ingress Protection Rating	BS 6121:2005
Cable Type	IP 2X
Protection Material	SWA and AWA
Continuous Operating Temp	Brass CuZn39Pb3 (CW614N) to EN12168
Standard Accessories	- 20° C to + 130° C
Optional	Earth Tag, Locknut
	PVC or LS0H Shroud
	Brass Nickel Plating Upon Request

TECHNICAL AND ORDERING DATA

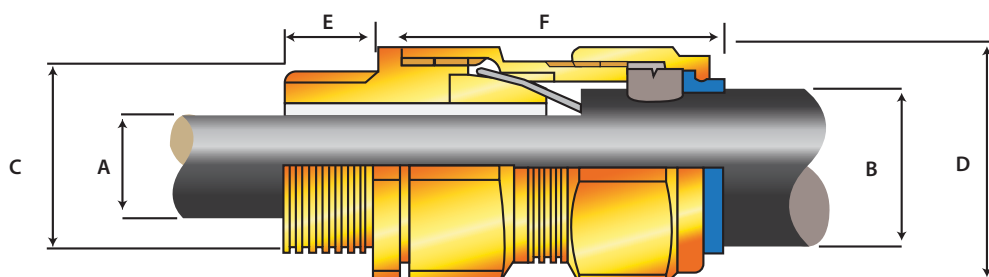
	Cable Gland Size	Cable Bedding Diameter 'A'	Cable Overall Diameter 'B'	Armour Range		Across Flat 'D'	Across Corners 'D'	Entry Thread 'C'	"Minimum Thread Length 'E'	Nominal Protrusion Length 'F'
		Max	Max	Min	Max	Max	Max			
BW20S:SMP	20S	11.70	16.10	0.90	1.25	22.00	24.00	M20	10	18
BW20L:SMP	20	14.00	21.10	0.90	1.25	28.00	30.50	M20	10	22
BW25:SMP	25	20.00	27.40	1.25	1.60	33.00	36.00	M25	10	26
BW32:SMP	32	26.30	34.40	1.60	2.00	41.00	44.50	M32	10	28
BW40:SMP	40	32.20	42.40	1.60	2.00	50.00	56.30	M40	10	30
BW50S:SMP	50S	38.20	50.10	2.00	2.50	57.10	62.50	M50	15	30
BW50L:SMP	50	44.10	55.70	2.00	2.50	65.00	70.00	M50	15	32
BW63S:SMP	63S	50.00	62.40	2.50	2.50	76.00	82.50	M63	15	38
BW63L:SMP	63	56.00	68.20	2.50	2.50	80.00	85.70	M63	15	38
BW75S:SMP	75S	62.00	76.80	2.50	2.50	90.00	98.70	M75	15	40
BW75L:SMP	75	68.00	82.90	2.50	3.15	95.00	103.70	M75	15	40

- » Dimensions are displayed in millimeters unless otherwise stated.
- » Photographs are not a true representation of the product above.

Disclaimer: The dimensions provided are for guidance only and Simplex Cables reserves the right to change these without prior notification. For any critical application please contact the sales office to check the latest data.

CW CABLE GLAND

- » CW type brass cable gland for use with Steel Wire Armoured Cable (SWA).
- » Single compression gland, providing mechanical cable retention and electrical continuity via armoured wire termination. Environmental seal on the outer sheath to IP 66.
- » Controlled outer load retention seal.
- » Cable gland complete kit includes: brass gland, locknut, earth tag and shroud.
- » Sizes M25 and lower, will contain two kits and sizes M32 and above will include one kit.



SPECIFICATIONS

Threading Standard	Metric
Ingress Protection Rating	BS 6121:2005, EN 62444:2013
Cable Type	IP66
Protection Material	Steel Wire Armor (SWA)
Continuous Operating Temp	Brass CuZn39Pb3 (CW614N) to EN12168
Standard Accessories	- 20° C to + 130° C
Optional	Earth Tag, Locknut, Entry Thread Seal
	PVC or LS0H Shroud
	Brass Nickel Plating Upon Request

TECHNICAL AND ORDERING DATA

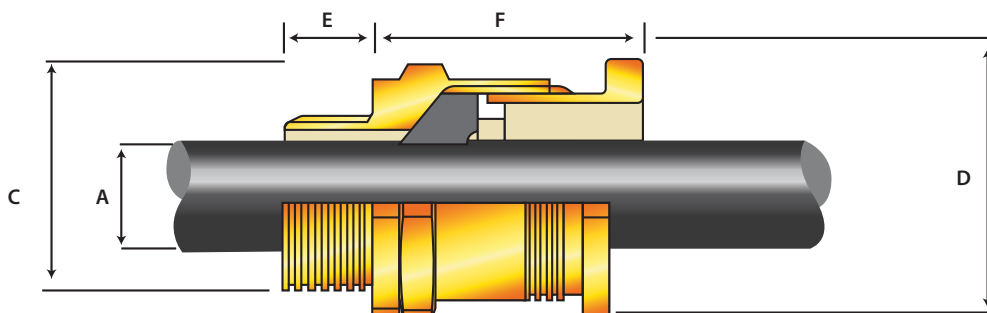
Part #	Cable Gland Size	Cable Overall Bedding Cable Diameter 'A'	Overall Cable Diameter 'B'		Armour Range		Across Flat 'D'	Across Corners 'D'	Entry Thread 'C'	Minimum Thread Length 'E'	Nominal Protrusion Length 'F'
		Min	Min	Max	Min	Max	Max	Max			
CW20S16:SMP	20S/16	8.70	6.10	11.50	0.90	1.00	24.00	26.60	M20	10	43
CW20S:SMP	20S	11.70	9.50	15.90	0.90	1.25	24.00	26.60	M20	10	43
CW20L:SMP	20	14.00	12.50	20.90	0.90	1.25	30.50	33.30	M20	10	50
CW25:SMP	25	20.00	18.20	26.20	1.25	1.60	36.00	40.00	M25	10	55
CW32:SMP	32	26.30	23.70	33.90	1.60	2.00	46.00	51.00	M32	10	55
CW40:SMP	40	32.20	27.90	40.40	1.60	2.00	55.00	61.00	M40	10	55
CW50S:SMP	50S	38.20	35.50	46.70	2.00	2.50	61.00	67.00	M50	15	56
CW50L:SMP	50	44.10	40.40	53.10	2.00	2.50	70.10	76.00	M50	15	70
CW63S:SMP	63S	50.00	45.60	59.40	2.00	2.50	76.00	82.20	M63	15	70
CW63L:SMP	63	56.00	54.60	65.90	2.00	2.50	80.00	86.00	M63	15	80
CW75S:SMP	75S	62.00	59.00	72.10	2.00	2.50	90.00	99.00	M75	15	81
CW75L:SMP	75	68.00	66.70	78.50	2.00	2.50	100.00	109.00	M75	15	96

- » Dimensions are displayed in millimeters unless otherwise stated.
- » Photographs are not a true representation of the product above.

Disclaimer: The dimensions provided are for guidance only and Simplex Cables reserves the right to change these without prior notification. For any critical application please contact the sales office to check the latest data.

A2 CABLE GLAND

- » A2 type brass cable gland for use with all types of unarmoured cable.
- » Single compression gland, with displacement type seal, providing mechanical cable retention and an environmental seal on outer sheath to IP-66, 67 and 68.
- » Cable gland complete kit includes: brass gland, locknut and shroud.
- » Sizes M25 and lower, will contain two kits and sizes M32 and above will include one kit.



SPECIFICATIONS

Threading Standard	Metric
Ingress Protection Rating	BS 6121:2005, EN 62444:2013
Cable Type	IP66, 67 and 68
Protection Material	Unarmoured
Continuous Operating Temp	Brass CuZn39Pb3 (CW614N) to EN12168
Standard Accessories	- 20° C to + 130° C
Optional	Locknut, Entry Thread Seal
	PVC or LS0H Shroud
	Brass Nickel Plating Upon Request

TECHNICAL AND ORDERING DATA

Part #	Cable Gland Size	Cable Overall Bedding Cable Diameter 'A';B;		Across Flat 'D'	Across Corners 'D'	Entry Thread 'C'		Minimum Thread Length 'E'	Nominal Protrusion Length 'F'
		Min	Max	Max	Max	Metric	NPT		
A220S16:SMP	20S/16	3.10	8.70	24.00	26.60	M20	1/2"	10	21
A220S:SMP	20S	6.10	11.70	24.00	26.60	M20	1/2"	10	21
A220L:SMP	20	6.50	14.00	27.00	29.00	M20	1/2"	10	24
A225:SMP	25	11.10	20.00	36.00	39.90	M25	3/4"	10	26
A232:SMP	32	17.00	26.30	41.00	45.50	M32	1"	10	27
A240:SMP	40	23.50	32.20	50.00	54.60	M40	1 1/4"	10	28
A250S:SMP	50S	31.00	38.20	55.00	59.00	M50	1 1/2"	15	29
A250L:SMP	50	35.60	44.10	60.00	65.40	M50	2"	15	30
A263S:SMP	63S	41.50	50.00	70.00	76.00	M63	2"	15	30
A263L:SMP	63	47.20	56.00	76.00	82.30	M63	2 1/2"	15	30
A275S:SMP	75S	54.00	62.00	85.00	92.50	M75	2 1/2"	15	32
A275L:SMP	75	61.10	68.00	85.00	92.50	M75	3"	15	32

- » Dimensions are displayed in millimeters unless otherwise stated.
- » Photographs are not a true representation of the product above.

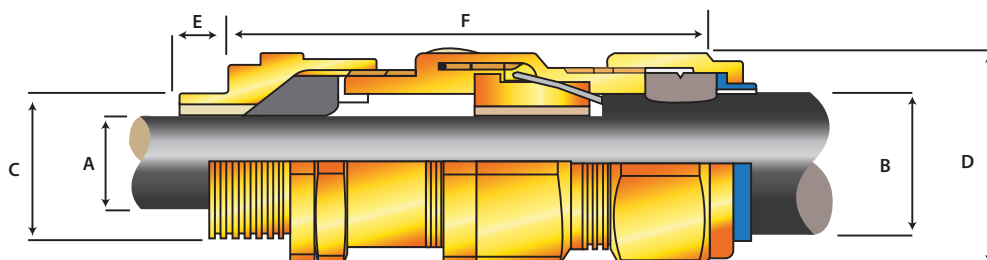
Disclaimer: The dimensions provided are for guidance only and Simplex Cables reserves the right to change these without prior notification. For any critical application please contact the sales office to check the latest data.

E1W CABLE GLAND

- » E1W type brass cable gland for use with all types of armoured cables.
- » Double compression gland, providing mechanical cable retention and electric continuity via armoured wire termination.
- » Environmental seal on the outer sheath to IP 66.

Inner seal provides grip to inner layer of cable and secures it against self loosening.

- » Cable gland complete kit includes: brass gland, locknut, earth tag and shroud.
- » Sizes M25 and lower, will contain two kits and sizes M32 and above will include one kit.



SPECIFICATIONS

Threading

Standard

Ingress Protection Rating

Cable Type

Protection Material

Continuous Operating Temp

Standard Accessories

Optional

Metric

BS 6121:2005, EN 62444:2013

IP66

All types of armoured cables

Brass CuZn39Pb3 (CW614N) to EN12168

- 20° C to + 130° C

Earth Tag, Locknut, Entry Thread Seal

PVC or LSOH Shroud

Brass Nickel Plating Upon Request

TECHNICAL AND ORDERING DATA

Part #	Cable Gland Size	Cable Overall Bedding Cable Diameter 'A'		Overall Cable Diameter 'b'		Armour Range		Across Flat 'D'	Across Corners 'D'	Entry Thread 'C'		"Minimum Thread Length 'E'"	Nominal Protrusion Length 'F'
		Min	Max	Min	Max	Min	Max	Max	Max	Metric	NPT		
E1W20S16:SMP	20S/16	3.10	8.70	6.10	11.50	0.90	1.00	24.00	26.60	M20	1/2"	10	63
E1W20S:SMP	20S	6.10	11.70	9.50	15.90	0.90	1.25	24.00	26.00	M20	1/2"	10	63
E1W20L:SMP	20	6.50	14.00	12.50	20.90	0.90	1.25	30.50	33.30	M20	1/2"	10	67
E1W25:SMP	25	11.10	20.00	18.20	26.20	1.25	1.60	37.50	40.50	M25	3/4"	10	78
E1W32:SMP	32	17.00	26.30	23.70	33.90	1.60	2.00	46.00	51.00	M32	1"	10	78
E1W40:SMP	40	22.00	32.20	27.90	40.40	1.60	2.00	55.00	61.00	M40	1 1/4"	10	83
E1W50S:SMP	50S	29.50	38.20	35.50	46.70	2.00	2.50	61.00	66.50	M50	1 1/2"	15	78
E1W50L:SMP	50	35.60	44.10	40.40	53.10	2.00	2.50	70.10	77.00	M50	2"	15	81
E1W63S:SMP	63S	40.10	50.00	45.60	59.40	2.00	2.50	75.00	83.20	M63	2"	15	93
E1W63L:SMP	63	47.20	56.00	54.60	65.90	2.00	2.50	80.00	88.00	M63	2 1/2"	15	95
E1W75S:SMP	75S	52.80	62.00	59.00	72.10	2.00	2.50	89.00	101.60	M75	2 1/2"	15	103
E1W75L:SMP	75	59.10	68.00	66.70	78.50	2.00	2.50	99.00	111.10	M75	3"	15	110

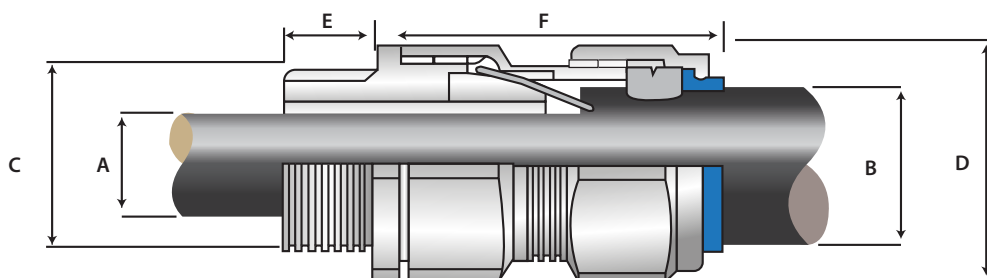
» Dimensions are displayed in millimeters unless otherwise stated.

» Photographs are not a true representation of the product above.

Disclaimer: The dimensions provided are for guidance only and Simplex Cables reserves the right to change these without prior notification. For any critical application please contact the sales office to check the latest data.

CW ALUMINIUM CABLE GLAND

- » CW type aluminium cable gland for use with Aluminium Wire Armoured Cable (AWA).
- » Single compression gland providing mechanical cable retention and electrical continuity via armoured wire termination.
- » Environmental seal on the outer sheath to IP 66.
- » Controlled outer load retention seal.
- » Environmental friendly, aluminium alloy used for extra strength & performance.
- » Cable gland kit includes: aluminium gland, locknut, earth tag and shroud.



SPECIFICATIONS

Threading Standard	Metric
Ingress Protection Rating	BS 6121:2005, EN 62444:2013
Cable Type	IP66
Protection Material	Aluminium Wire Armoured (AWA)
Continuous Operating Temp	6082 Extruded Aluminium Alloy
Standard Accessories	-20° C to +130° C
Optional	Earth Tag, Locknut, Entry Thread Seal
	PVC or LS0H Shroud

TECHNICAL AND ORDERING DATA

Part #	Cable Gland Size	Cable Bedding Diameter 'A'	Overall Cable Diameter 'B'		Armour Range		Across Flat 'D'	Across Corners 'D'	"Minimum Thread Length 'E'"	Nomi-nal Pro-trusion Length 'F'
		Max	Min	Max	Min	Max	Max	Max		
ALCW50S:SMP	50S	38.20	35.20	46.70	2.00	2.50	60.00	66.50	15	56
ALCW50L:SMP	50	44.10	40.40	53.10	2.00	2.50	70.10	78.60	15	70

- » Dimensions are displayed in millimeters unless otherwise stated.
- » Photographs are not a true representation of the product above.

Disclaimer: The dimensions provided are for guidance only and Simplex Cables reserves the right to change these without prior notification. For any critical application please contact the sales office to check the latest data.

PG NYLON CABLE GLAND



SPECIFICATIONS

Material:	PA (NYLON), UL 94 V-2
Hermetic seal:	NBR, (EPDM Upon Request)
O-Ring:	EPDM
Working temperature:	-40C° to 100C° in static state, Instantaneous heat resistance up to 120C°, -20C° to 80C° in dynamic state, Instantaneous heat resistance up to 100C°
Color:	Grey, Black, other colors customized.

TECHNICAL AND ORDERING DATA

Part #	Thread	Ø	H	GL	⚡
RAL7035 ●	Ø D1	mm	mm	mm	mm
P0707	PG 7	3-6,5	21	8	15
P0705	PG 7	2-5	21	8	15
P0908	PG 9	4-8	22	8	19
P0906	PG 9	2-6	22	8	19
P1110	PG 11	5-10	25	8	22
P1107	PG 11	3-7	25	8	22
P13512	PG 13,5	6-12	27	9	24
P13509	PG 13,5	5-9	27	9	24
P1614	PG 16	10-14	28	10	27
P1612	PG 16	7-12	28	10	27
P1915-DH	PG 19	11-15	30	12	27
P2118	PG 21	13-18	31	11	33
P2116	PG 21	9-16	31	11	33
P2925	PG 29	18-25	37	11	42
P2920	PG 29	13-20	37	11	42
P3632	PG 36	22-32	48	13	53
P3626	PG 36	20-26	48	13	53
P4238	PG 42	32-38	49	13	60
P4231	PG 42	25-31	49	13	60
P4844	PG 48	37-44	49	14	65
P4835	PG 48	29-35	49	14	65
P4830	PG 48	25-30,5	49	14	65
P4840	PG 48	30,5-40	49	14	65
P4850	PG 48	40-50	52	14	72

» Dimensions are displayed in millimeters unless otherwise stated.

» Photographs are not a true representation of the product above.

Disclaimer: The dimensions provided are for guidance only and Simplex Cables reserves the right to change these without prior notification. For any critical application please contact the sales office to check the latest data.

PG METAL CABLE GLAND



SPECIFICATIONS

Material:	Nickel-plated brass
Fixture pack:	PA (NYLON), UL 94 V-2
Hermetic seal:	NBR, (EPDM Upon Request)
O-Ring:	EPDM
Protection degree:	IP68
Working temperature:	-40C° to 100C°, Instantaneous heat resistance up to 120C°

TECHNICAL AND ORDERING DATA

Part #	Thread	Øk	H	GL	ØD1
	Ø D1	mm	mm	mm	mm
P0707BR	PG 7	3-6,5	19	5	14
P0705BR	PG 7	2-5	19	5	14
P0908BR	PG 9	4-8	21	6	17
P0906BR	PG 9	2-6	21	6	17
P1110BR	PG 11	5-10	22	6	20
P1107BR	PG 11	3-7	22	6	20
P13512BR	PG 13,5	6-12	23	6,5	22
P13509BR	PG 13,5	5-9	23	6,5	22
P1614BR	PG 16	10-14	24	6,5	24
P1612BR	PG 16	7-12	24	6,5	24
P2118BR	PG 21	13-18	25	7	30
P2116BR	PG 21	9-16	25	7	30
P2925BR	PG 29	18-25	31	8	40
P2920BR	PG 29	13-20	31	8	40
P3632BR	PG 36	22-32	37	8	50
P3626BR	PG 36	20-26	37	8	50
P4238BR	PG 42	32-38	37	9	57
P4231BR	PG 42	25-31	37	9	57
P4844BR	PG 48	37-44	38	10	64
P4835BR	PG 48	29-35	38	10	64

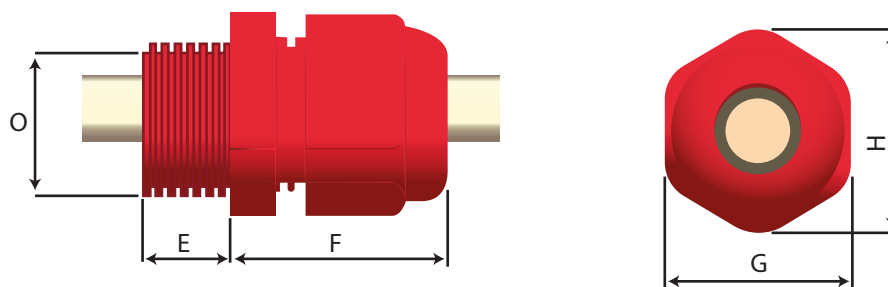
» Dimensions are displayed in millimeters unless otherwise stated.

» Photographs are not a true representation of the product above.

Disclaimer: The dimensions provided are for guidance only and Simplex Cables reserves the right to change these without prior notification. For any critical application please contact the sales office to check the latest data.

FIRE RATED CABLE GLAND

- » Suitable for Indoor and Outdoor application.
- » Suitable for use with all Fire Alarm.
- » Compressible entry thread seals molded into Gland Body.
- » Available in two colors Red & White.
- » Supplied complete with Locknut.



SPECIFICATIONS

- » Material : Flame Retardant Nylon
- » Protection : IP-68
- » Complies with BS EN-50262
- » Supplied complete with Locknut.

TECHNICAL AND ORDERING DATA

Gland Kit Reference			Cable Dimension (mm)		Cable Dimension (mm)			Hexagon (mm)	
Part #	Size	Qty Per Kit	Diameter		Entry Thread (D)	Thread Lth (E)	Protrusion Lth (F)	A/F (G)	A/C (H)
			Min	Max					
SMP20	20	100	6	12	M20X1.5	12	30	24	26.5
SMP25	25	100	9	17	M25X2.5	10	32	30	32

Kit Comprises :

Nylon Gland
Nylon lock nut



- » Dimensions are displayed in millimeters unless otherwise stated.
- » Photographs are not a true representation of the product above.

Disclaimer: The dimensions provided are for guidance only and Simplex Cables reserves the right to change these without prior notification. For any critical application please contact the sales office to check the latest data.

Wiping Gland

Wiping Gland for indoor and outdoor use with all types of Steel Wire Armoured (SWA) cable and Aluminium Wire Armoured (AWA) cable providing mechanical cable retention & electrical continuity via armored wire termination and Environmental seal on the cable outer sheath.



SPECIFICATIONS

Type	Wiping Gland
Standard	BS 2874
Material	Brass
Size	X, Y and Z
Application	SWA & AWA Armoured Cable
Accessories	Hot Dip Galvanized Mild Steel Clamp, Neoprene Gasket.
Packing	As Per Standard Packing

Shrouds (PVC/LSHF)

Shrouds adds extra protection to Cable Glands, made from high grade polyvinyl chloride. The shrouds are used to increase the protection against external chemical and environmental agents of cable glands, especially on cable entrance. The significative reduction of dirt or foreign substances on the cable gland will facilitate the future maintenance of cable glands. The arrow end of the sleeves is readily cut with a knife, enabling it to be slipped over a wide range of cable diameters and assists ease of installations. Standard Shrouds are produced from black PVC. LSHF shroud mostly used in Grey colour but we also supply in white, red, and blue colour.



SPECIFICATIONS

Type	PVC Shroud / LSHF Shroud
Standard	BS
Material	Black High-Grade Polyvinylchloride
Protection Class	LSF and LSOH Shroud manufactured Low smoke and halogen free materials
Packing	IP68
Optional	As Per Standard Packing
Available in Red Colour for LSHF Cables	Available in Light Grey, Grey and Black for PVC Cables

- » Dimensions are displayed in millimeters unless otherwise stated.
- » Photographs are not a true representation of the product above.

Disclaimer: The dimensions provided are for guidance only and Simplex Cables reserves the right to change these without prior notification. For any critical application please contact the sales office to check the latest data.

INSULATED CABLE CONNECTORS

MALE PRE-INSULATION SPLICE

SMP-MDD:1.25-110
SMP-MDD:1.25-187
SMP-MDD:1.25-250
SMP-MDD:2-187
SMP-MDD:2-250
SMP-MDD:5.5-250



FEMALE PRE-INSULATION SPLICE

SMP-FDD:1.25-110
SMP-FDD:1.25-187
SMP-FDD:1.25-250
SMP-FDD:2-187
SMP-FDD:2-250
SMP-FDD:5.5-250
SMP-FDD:5.5-375



BULLET SHAPE MALE PRE-INSULATION TERMINAL

SMP-MPD:1.25-156
SMP-MPD:2-156
SMP-MPD:2-195
SMP-MPD:5.5-195



BULLET SHAPE FEMALE PRE-INSULATION TERMINAL

SMP-FRD:1.25-156
SMP-FRD:2-156
SMP-FRD:2-195
SMP-FRD:5.5-195



NEEDLE SHAPE PRE-INSULATION TERMINAL

SMP-PTV:1.25-9

SMP-PTV:1.25-10

SMP-PTV:1.25-12

SMP-PTV:1.25-13

SMP-PTV:2-10

SMP-PTV:2-12

SMP-PTV:2-13

SMP-PTV:5.5-13



PLATE SHAPE PRE-INSULATION TERMINAL

SMP-DBV:1.25-10

SMP-DBV:1.25-11

SMP-DBV:1.25-14

SMP-DBV:1.25-18

SMP-DBV:2-10

SMP-DBV:2-18

SMP-DBV:5.5-10



- » Dimensions are displayed in millimeters unless otherwise stated.
- » Photographs are not a true representation of the product above.

Disclaimer: The dimensions provided are for guidance only and Simplex Cables reserves the right to change these without prior notification. For any critical application please contact the sales office to check the latest data.

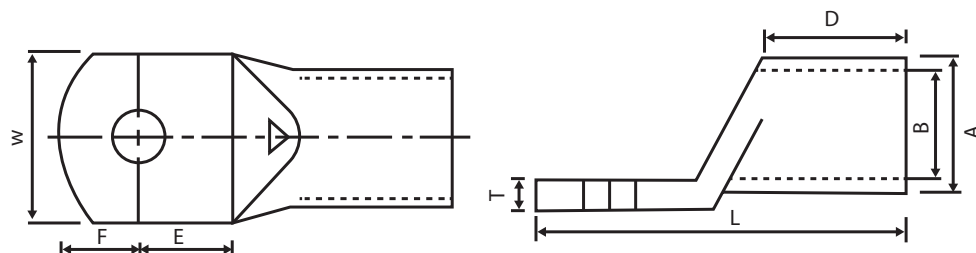
CABLE LUGS

Our cable lugs range allows cable insertion to be handled efficiently for the opening of the conductor.

place itself rightly inside the surface area of the crimp.

Inspection Hole: The unique design of the inspection hole, helps the conductor to insert fully. The stopper at the end of the insertion allows the conductor to

Application: Suitable for low & medium voltage switch gear & control panel."



SPECIFICATIONS

Standard Material

IEC 61238-1
Manufactured from seamless copper (99.5% min.) tube conforming to BS EN 12449:2012

Finish

Electro tin-plated conforming to BS EN 1872:1984

TECHNICAL AND ORDERING DATA

Part #	Cond. Size	"Barrel O.D. 'A'	"Barrel I.D. 'B'	"Stud Hole Center 'E'	Stud Hole Center To End of Palm 'F'	Palm Width 'W'	"Barrel Length 'D'	"Total Length 'L'	Thick-ness 'T'
1.5-3:SMP	1.5	3.8	1.9	4.5	4.5	7	7	18	1.9
1.5-4:SMP	1.5	3.8	1.9	7.5	4.5	7	7	21	1.9
1.5-5:SMP	1.5	3.8	1.9	7.5	4.5	8	7	21	1.9
1.5-6:SMP	1.5	3.8	1.9	7.5	4.5	9	7	22	1.9
2.5-3:SMP	2.5	3.9	2.4	4	4.5	7	8	18.5	1.5
2.5-4:SMP	2.5	3.9	2.4	7.5	4.5	7	8	22	1.5
2.5-5:SMP	2.5	3.9	2.4	7.5	4.5	9	8	22	1.5
2.5-6:SMP	2.5	3.9	2.4	7.5	5.5	9.5	8	23	1.5
2.5-8:SMP	2.5	3.9	2.4	7.5	7.5	12	8	25	1.5
4-3:SMP	4	4.7	2.8	4.5	4.5	7	8	19	1.9
4-4:SMP	4	4.7	2.8	7.5	4.5	7	8	22	1.9
4-5:SMP	4	4.7	2.8	7.5	4.5	8.5	8	22	1.9
4-6:SMP	4	4.7	2.8	7.5	5.5	10	8	23	1.9
4-8:SMP	4	4.7	2.8	10.5	6.5	13	8	27	1.9
4-10:SMP	4	4.7	2.8	11.5	7.5	14	11	32	1.9
6-4:SMP	6	5.3	3.4	7.5	4.5	7.5	8.5	23.5	1.9
6-5:SMP	6	5.3	3.4	7.5	4.5	8.5	8.5	23.5	1.9

6-6:SMP	6	5.3	3.4	7.5	5.5	9.5	9	25	1.9
6-8:SMP	6	5.3	3.4	10	7	12	9	29	1.9
6-10:SMP	6	5.3	3.4	12	8	15	11	34	1.9
10-6:SMP	10	6.6	4.7	6.4	6	10	8	24.5	1.7
10-8:SMP	10	6.6	4.7	8	7	13	9.5	30.5	1.2
10-10:SMP	10	7.1	4.4	12	10	16	12	39.5	1.4
10-12:SMP	10	7.1	4.4	12	10	18	10	10.5	1.2
16-6:SMP	16	7.5	5.5	8.8	6.2	10.8	9.5	30	2
16-8:SMP	16	7.5	5.5	8.8	6.2	13.5	9.5	30	1.6
16-10:SMP	16	7.5	5.5	10.9	9.6	15	9.5	36	1.5
16-12:SMP	16	8	5.6	12	10	18	11.5	42	1.3
25-6:SMP	25	9.4	7	8.8	6.5	13.8	12	32.5	2.4
25-8:SMP	25	9.4	7	8	7	13.8	12	32.5	2.4
25-10:SMP	25	9.4	7	10.9	9.6	16	13	39.5	2.1
25-12:SMP	25	9.4	7	10.5	10	18	12.5	39	1.7
35-6:SMP	35	10.6	8.2	8.7	6.3	15.3	15	36.5	2.4
35-8:SMP	35	10.6	8.2	7.6	7.3	15.3	15	36.5	2.4
35-10:SMP	35	10.6	8.2	10.9	9.6	15.3	15	41	2.4
35-12:SMP	35	10.6	8.2	10	10.4	18	15	41	2.4
50-6:SMP	50	11.9	9.5	8.8	6.2	17.4	14.9	37.5	2.5
50-8:SMP	50	11.9	9.5	8	7	17.4	14.9	37.5	2.5
50-10:SMP	50	11.9	9.5	10.9	9.6	17.4	15.5	42.5	2.5
50-12:SMP	50	11.9	9.5	10.7	9.8	17.4	15.5	42.5	2.5
70-6:SMP	70	14.5	11.5	9	6.4	20.9	17	41.5	3
70-8:SMP	70	14.5	11.5	8.6	6.4	20.9	17	40.5	3
70-10:SMP	70	14.5	11.5	10.9	9.6	20.9	17.5	47	3
70-12:SMP	70	14.5	11.5	10.7	9.8	20.9	17.5	46.5	3
70-16:SMP	70	14.5	11.5	13	13	20.9	17	51	3
95-6:SMP	95	16.7	13.5	10	9.2	24.4	19	50	3.2
95-8:SMP	95	16.7	13.5	10.1	9.9	24.4	19	50	3.2
95-10:SMP	95	16.7	13.5	10.9	9.6	24.4	19	50	3.2
95-12:SMP	95	16.7	13.5	10.5	10	24.4	19	50	3.2
95-14:SMP	95	16.7	13.5	13	13	24.4	19	58	3.2
95-16:SMP	95	16.7	13.5	13	13	24.4	19	59	3.2
120-8:SMP	120	19	15	14.4	9.6	27.3	20	55.5	4
120-10:SMP	120	19	15	14.4	9.6	27.3	20	55.5	4
120-12:SMP	120	19	15	14	10	27.3	20	56.5	4
120-16:SMP	120	19	15	14	14	27.3	20	64	4
150-10:SMP	150	21	16.5	14	10	30.2	23	61	4.5
150-12:SMP	150	21	16.5	13	13	30.2	23	61	4.5

150-14:SMP	150	21	16.5	13	13	30.2	23	61	4.5
150-16:SMP	150	21	16.5	13	13	30.2	23	65	4.5
185-10:SMP	185	23	18.5	14.8	9.2	33.3	29	66.5	4.36
185-12:SMP	185	23	18.5	15.5	9.2	33.3	29	68	4.5
185-14:SMP	185	23	18.5	15.5	9.2	33.3	29	67	4.5
185-16:SMP	185	23	18.5	13	13	33.3	29	70	4.5
240-10:SMP	240	26	21	18	17	37.7	39	88	5
240-12:SMP	240	26	21	18	17	37.7	40	88.5	5
240-14:SMP	240	26	21	18	17	37.7	40	88	5
240-16:SMP	240	26	21	18	17	37.7	40	88	5
240-20:SMP	240	26	21	18	17	37.7	40	88	5
300-10:SMP	300	28	23	18	17	41	37	97	5
300-12:SMP	300	28	23	18	17	41	37	97	5
300-14:SMP	300	28	23	18	17	41	37	97	5
300-16:SMP	300	28	23	18	17	41	37	97	5
300-20:SMP	300	28	23	18	17	41	37	97	5
400-10:SMP	400	32	27	22	22	47.3	38	108	5
400-12:SMP	400	32	27	22	22	47.3	38	108	5
400-14:SMP	400	32	27	22	22	47.3	38	108	5
400-16:SMP	400	32	27	22	22	47.3	38	108.5	5
400-20:SMP	400	32	27	22	22	47.3	38	108	5
500-10:SMP	500	36	30	28	24	53	38	117	6.9
500-12:SMP	500	36	30	28	24	53	38	117	6.9
500-14:SMP	500	36	30	28	24	53	38	117	6.9
500-16:SMP	500	36	30	28	24	53	38	117.5	6.9
500-20:SMP	500	36	30	28	24	53	38	117	6.9
630-16:SMP	630	45	34	23	25.1	63.3	48	130.5	10
630-20:SMP	630	45	34	23	25.1	63.3	48	130.5	10
630-BL:SMP	630	45	34	23	25.1	63.3	48	130.5	10
800-BL:SMP	800	49	38	-	-	70	65	172	11

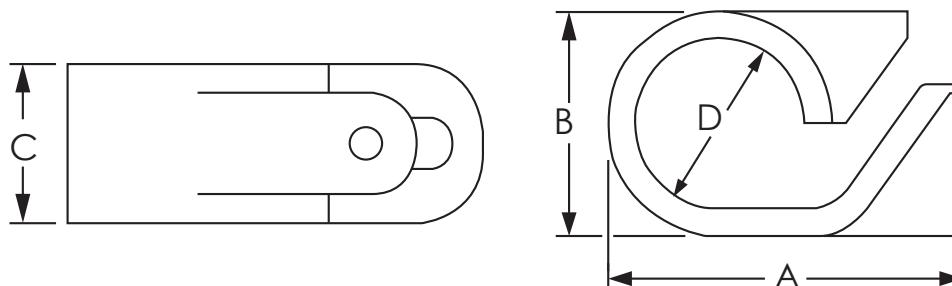
HT/BM Cable Lugs Available based on request

- » Dimensions are displayed in millimeters unless otherwise stated.
- » Photographs are not a true representation of the product above.

Disclaimer: Disclaimer: The dimensions provided are for guidance only and Simplex Cables reserves the right to change these without prior notification. For any critical application please contact the sales office to check the latest data.

LSOH SINGLE BOLT CABLE CLEAT

- » Single piece design suitable to fix power cables in indoor and outdoor applications.
- » The curvature of the cleat mounting surface is appropriate for cable diameters 10mm to 51mm.
- » Designed to assure cable retention and support, without causing damage or deformation to the cable.
- » Excellent resistance to ultraviolet and weather.



SPECIFICATIONS

Standard
Cable Type
Material
Continuous Operating Temperature
Current Rating

BS EN 50368
 Designed for all types of cables
 Low Smoke Zero Halogen Polymer
 -40°C to +60°C
 Recommended up to 1KVA

TECHNICAL AND ORDERING DATA

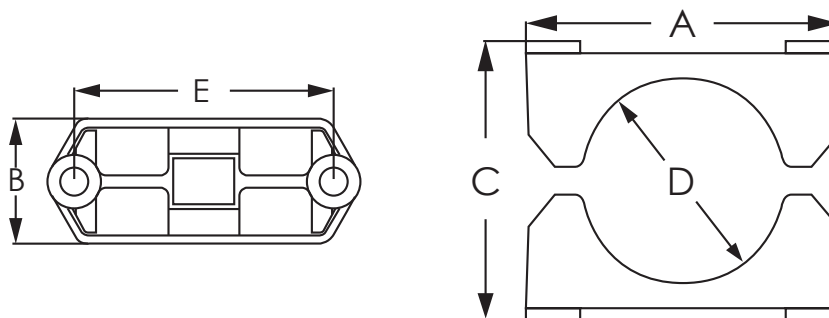
Part #	Cleat Details				Cable Diameter 'D'	
	B		A	C		
	Min	Max			Min	Max
SB-01:SMP	15	18	32	12	10.5	14.5
SB-02:SMP	17	22	36	14	12.2	16.7
SB-03:SMP	21	26	43	16	14.6	19.8
SB-04:SMP	25	31	51	18	17.7	24
SB-05:SMP	30	37	57	20	21.7	28.5
SB-06:SMP	35	43	65	22	26.2	34.2
SB-07:SMP	42	52	78	25	31.9	41.6
SB-08:SMP	50	62	91	26	39.3	51.1

- » Dimensions are displayed in millimeters unless otherwise stated.
- » Photographs are not a true representation of the product above.

Disclaimer: The dimensions provided are for guidance only and Simplex Cables reserves the right to change these without prior notification. For any critical application please contact the sales office to check the latest data.

LSOH DOUBLE BOLT CABLE CLEAT

- » Two bolt type design suitable for all types of LV cables.
- » The curvature of the cleat mounting surface is appropriate for cable diameters ranging from 50mm to 94mm.
- » Designed to assure cable retention and support, without causing damage or deformation to the cable.
- » Excellent resistance to ultraviolet and weather.



SPECIFICATIONS

Standard
Cable Type
Material
Continuous Operating Temperature
Current Rating

BS EN 50368
 Designed for all types of cables
 Low Smoke Zero Halogen Polymer
 -40°C to +60°C
 Recommended up to 1KVA

TECHNICAL AND ORDERING DATA

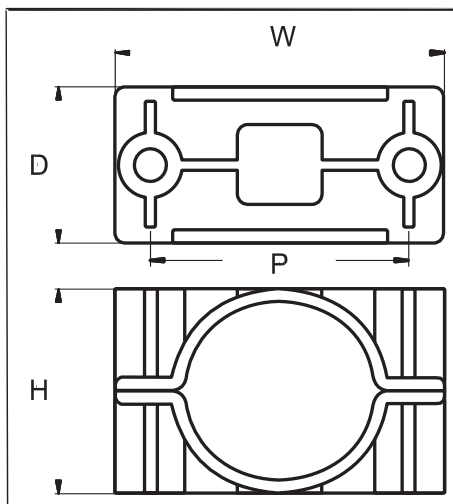
PART #	Cleat Details				Cable Diameter 'D'	
	C	A	B	E	Min	Max
DB-01:SMP	89	102	45	80	50	58
DB-02:SMP	93	102	45	80	56	64
DB-03:SMP	98	114	45	92	62	70
DB-04:SMP	104	114	50	92	68	76
DB-05:SMP	110	126	50	104	74	82
DB-06:SMP	118	126	50	104	80	88
DB-07:SMP	121	136	60	114	86	94

- » Dimensions are displayed in millimeters unless otherwise stated.
- » Photographs are not a true representation of the product above.

Disclaimer: The dimensions provided are for guidance only and Simplex Cables reserves the right to change these without prior notification. For any critical application please contact the sales office to check the latest data.

ALUMINIUM DOUBLE BOLT CABLE CLEAT

- » Two bolt fixing type design
- » Suitable for use with cables from diameter 51mm to 114mm
- » Plain finish - for indoor dry normal industrial use or outdoor unpolluted areas.
- » Epoxy coated for more hostile conditions.



SPECIFICATIONS

Cable Type
Material
Continuous Operating Temperature
Current Rating

Designed for all types of cables

Aluminium

– 60° C to + 100° C

Recommended above 1KVA

TECHNICAL AND ORDERING DATA

Part #	Cable Diameter Range	Cleat Details				Fixing Hole
		W	H	D	P	
ATC:51-57	51-57	96	68	59	76	M10
ATC:57-64	57-64	6	75	49	76	M10
ATC:64-70	64-70	96	84	64	118	M10
ATC:70-76	70-76	134	90	64	114	M10
ATC:76-83	76-83	142	96	64	114	M12
ATC:83-89	83-89	142	102	64	114	M12
ATC:89-95	89-95	154	114	64	114	M12
ATC:95-101	95-101	154	120	76	126	M12
ATC:101-108	101-108	169	134	76	140	M12
ATC:108-114	108-114	169	140	76	149	M12

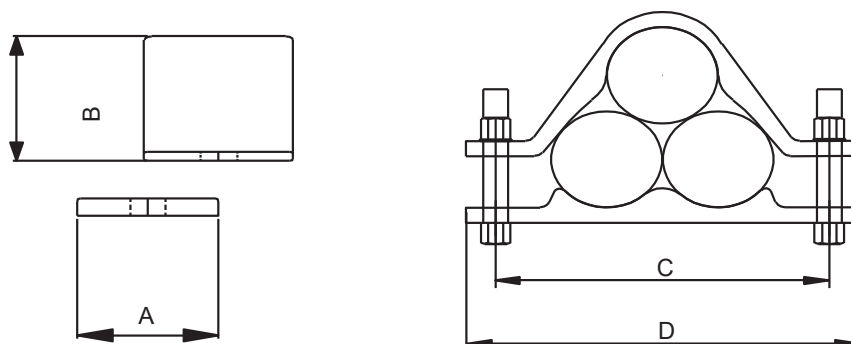
» Dimensions are displayed in millimeters unless otherwise stated.

» Photographs are not a true representation of the product above.

Disclaimer: The dimensions provided are for guidance only and Simplex Cables reserves the right to change these without prior notification. For any critical application please contact the sales office to check the latest data.

ALUMINIUM TREFOIL CABLE CLEAT

- » Suitable for use with LV, MV and HV cables.
- » Few range accommodates wide range of cable diameter.
- » Plain finish - for indoor dry normal industrial use or outdoor unpolluted areas.
- » Epoxy coated for more hostile conditions.



SPECIFICATIONS

Cable Type
Material
Continuous Operating Temperature
Current Rating

Designed for all types of cables
 Aluminium
 – 60° C to + 100° C
 Recommended above 1KVA

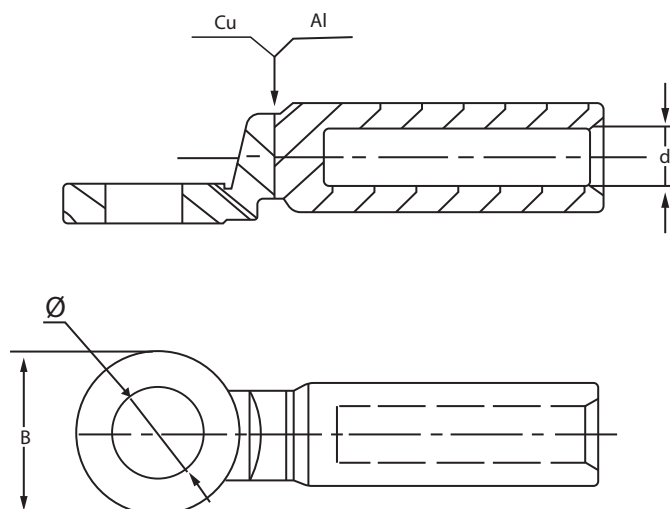
TECHNICAL AND ORDERING DATA

Part #	Cable Diameter	Cleat Details			
		A	B	C	D
ATFCSP:15-30	15-30	30	45	108	80
ATFCSP:30-45	30-45	30	66	151	120
ATFCSP:45-60	45-60	40	85	184	151
ATFCSP:60-75	60-75	40	114	226	193
ATFCSP:75-90	75-90	40	142	267	235
ATFCSP:90-107	90-107	50	171	319	282
ATFCSP:107-129	107-129	57	203	390	352
ATFCSP:129-155	129-155	57	244	455	397

- » Dimensions are displayed in millimeters unless otherwise stated.
- » Photographs are not a true representation of the product above.

Disclaimer: The dimensions provided are for guidance only and Simplex Cables reserves the right to change these without prior notification. For any critical application please contact the sales office to check the latest data.

BI-METALLIC LUGS



SPECIFICATIONS

Standard
Material
Surface Treatment

IEC 61238-1
 E-Cu; Al (99.6%)
 Bright

TECHNICAL AND ORDERING DATA

Part #	DIMENSIONS (mm)		
	D	B	Ø
16BS-10:SMP	5.60	20.00	10.50
25BS-10:SMP	6.50	20.00	10.50
35BS-10:SMP	8.50	20.00	10.50
50BS-12:SMP	9.50	24.00	12.80
70BS-12:SMP	11.00	24.00	12.80
95BS-12:SMP	12.50	24.00	12.80
120BS-12:SMP	13.70	30.00	12.80
150BS-12:SMP	15.50	30.00	12.80
185BS-12:SMP	17.00	35.00	12.80
240BS-12:SMP	19.50	35.00	12.80
300BS-16:SMP	23.30	36.00	16.50
400BS-16:SMP	26.00	36.00	16.50
500BS-16:SMP	29.00	60.00	17.00
630BS-16:SMP	32.50	60.00	17.00

» Dimensions are displayed in millimeters unless otherwise stated.

» Photographs are not a true representation of the product above.

Disclaimer: The dimensions provided are for guidance only and Simplex Cables reserves the right to change these without prior notification. For any critical application please contact the sales office to check the latest data.

CAPARO MIDDLE EAST

Terms and Conditions of Trading

INTERPRETATION

1.1 (In these conditions)

BUYER: means the person, firm or the company entering into the Contract to purchase the goods and/or Service from the Seller.

CONDITIONS: means the standard terms and conditions of sale set out in this document and (unless the context otherwise requires) includes any special terms and conditions agreed in writing between the Buyer and the Seller.

CONTRACT: means the contract for the purchase and sale of Goods and/or Services.

DELIVERY DATE: means the earlier of the time of actual delivery of the Goods or, if the Goods are to be collected by the Buyer or the Buyer wrongfully fails to take delivery of the Goods, the date that the Seller notifies the Buyer that the Goods are ready for delivery or, as the case maybe, the Seller tenders delivery of the Goods or, if the Buyer wrongfully fails to allow the performance of the Services, the date that the Seller notifies the Buyer that it is in a position to perform the Services.

GOODS: means the goods (including any installment of the Goods or any parts for them) which the Seller is to supply in accordance with these Conditions.

SELLER: means Caparo Management S.A. Trading as CAPARO MIDDLE EAST.

SERVICES: means the Services which the Seller is to supply in accordance with these Conditions.

TOOLING: includes patterns, tooling & dies.

WRITING: includes telex, cable, facsimile transmission, electronic mail and comparable means of communication.

2. BASIS OF THE CONTRACT

2.1 These Conditions shall govern the Contract to the exclusion of any other terms and conditions.

3. ORDERS AND SPECIFICATION

3.1 The Buyer shall be responsible to the Seller for ensuring the accuracy of the terms of any order (including any applicable specification) and for giving the Seller any necessary information relating to the contract within a sufficient time to enable the Seller to perform the Contract. Where the Goods are to be supplied to the Buyer's specification, the Buyer warrants that the Goods are capable of production.

3.2 The quantity, quality and description of and any specification for the Goods and/or the description of the Services shall be those set out in the Seller's quotation (if accepted by the Seller).

3.3 The Seller reserves the right to make any changes in the specification of the Goods or Services which are required to conform with any applicable safety or other statutory or legal requirements or, where the Goods or Services are to be supplied to the Seller's specification, which do not materially affect their quality or performance.

3.4 No Contract maybe cancelled by the Buyer except with the agreement in writing of the Seller and on terms that the Buyer shall indemnify the Seller in full against all loss (including loss of profit), costs, damages, charges and expenses.

3.5 The Buyer shall indemnify and keep indemnified the Seller against any claim or liability in respect of any infringement of intellectual or industrial property rights resulting from compliance with the Buyer's instructions express or implied.

3.6 Drawing, illustration and Specifications prepared by or on behalf of the Seller in connection with the Contract shall remain the property of the Seller and shall not be communicated to third parties without the Seller's prior written consent.

3.7 The Seller's reserves the right to undertake credit references and may suspend delivery of Goods or performance of the Contract or any other contract with the Buyer, if such references are unsatisfactory.

3.8 Each performance or delivery schedule submitted by the Buyer shall constitute an order capable of acceptance by the Seller. If the Seller agrees that any such schedule shall not constitute an order in circumstances where it is reasonably necessary for the Seller to act in reliance upon such schedule so as to enable the Seller to perform the schedule in accordance with its terms if such schedule becomes an order accepted by the Seller, the buyer shall indemnify and keep the Seller indemnified all, costs, damages, charges and expenses arising from such reliance by the seller if such schedules does not become an order capable of acceptance by the Seller.

4. PRICE

4.1 The price shall be the Seller's quoted price, or where no price has been quoted or a quoted price is no longer valid, the price listed in the Seller's published price list current at the date of acceptance of the order. Where the Goods are supplied for export, the Seller's export price list shall apply in the absence of a price quoted by the Seller. All prices quoted are valid for 30 days or until earlier acceptance by the Buyer, after which time they maybe altered by the Seller without notice.

4.2 The Seller reserves the right to increase the price to reflect any increase in the cost to the Seller which is due to any factor beyond the Seller's control, any change in delivery or performance dates, quantities or specifications which is requested by the Buyer, or any delay caused by any instructions of the Buyer to give the Seller adequate information or instructions.

4.3 All prices are given by the Seller on an ex-works basis, unless otherwise confirmed in writing by the Seller.

4.4 The price is exclusive of any applicable value added tax, which the Buyer shall be additionally liable to pay to the Seller.

4.5 The costs of pallets and returnable containers will be charged to the Buyer in addition to the price but full credit will be given to the Buyer provided they are returned undamaged to the Seller within 28 days of the date of delivery.

5. TERMS OF PAYMENT

5.1 The Seller shall be entitled to invoice the Buyer for the price on or at any time after the Delivery Date.

5.2 The Buyer shall pay the price without any deduction or set-off (save as set out in this condition 5.2) on or before the last day of the month following the Delivery Date and the Seller shall be entitled to recover the price, notwithstanding that delivery may not have taken place and the property in the Goods has not passed to the Buyer and/or the Services have not been performed. The time of payment of the price shall be of the essence of the contract.

5.3 If the Buyer fails to make any payment on the due date then, without prejudice to any other right or remedy, the Seller shall be entitled to;

5.3.1 suspend all or any further deliveries to the Buyer or suspend the provision of all or any services made under that or any other contract with the Buyer and in such event the Buyer shall not be released from its obligations to the Seller under that or any other contract or cancel the contract or any other contract with the Buyer, and the Seller shall have the right to claim damages from the Buyer for breach of contract;

5.3.2 appropriate any payment made by the Buyer to such part of the Contract or the Goods (or the Goods supplied under any other contract between the Buyer and the Seller) as the Seller may think fit (notwithstanding any purported appropriation by the Buyer); and

5.3.3 charge the Buyer interest (both before and after judgment) on the amount unpaid, at the rate of 12% per annum accruing daily, until payment in full is made.

5.4 The Seller may without notice set off any sums from time to time owed to the Buyer in or towards the satisfaction of all and any liabilities of the Buyer to the Seller whether or not under this contract.

5.5 The Seller shall have a general lien over all goods and property of the buyer (whether worked on or not) in the possession of the Seller for all unpaid debts due from the Buyer and the Seller reserves the right upon the expiration of fourteen days written notice to dispose of such good or property and to apply the proceeds of sale (net of costs of sale) towards the payment of such debts.

6. DELIVERY AND PERFORMANCE

6.1 The Buyer shall be responsible for the unloading of Goods and where the Seller or its employees or agents carries out or assist the Buyer in such unloading. The Buyer shall indemnify and keep indemnified the Seller against all liabilities including without limitation all loss, costs, damages, charges and expenses from such unloading.

6.2 Any dates quoted for delivery of the Goods or performance of the Service are approximate only and the Seller shall not be liable for any delay howsoever caused. The Goods may be delivered and/or Services maybe performed by the Seller in advance of the quoted delivery date upon giving reasonable notice to the buyer.

6.3 The Seller reserves the right to under or over-deliver the order quantity of any Goods by up to 10% more or less without any adjustments in the price, and the quantity so delivered shall be deemed to be the quantity ordered.

6.4 Where the Goods are to be delivered or Services performed in installments, each delivery or performance shall constitute a separate contract and failure by the Seller to deliver or perform any one or more of the installment in accordance with these Conditions or any claim by the Buyer in respect of any one or more installments shall not entitle the Buyer to treat the Contract as a whole as repudiated.

6.5 If the Seller fails to deliver the Goods (or any installment) or perform any Services (or any installment) for any reason other than any cause beyond the Seller reasonable control or the Buyer's fault, and the Seller is accordingly liable to the Buyer, the Seller's liability shall be limited to the excess, if any, of the reasonable costs to the buyer (in the cheapest available market) of similar goods and/or services to replace those not delivered over the price of the Goods and/or Services.

6.6 If the Buyer fails to take delivery of the Goods or to allow performance of the Services or fails to give the Seller adequate delivery or performance instructions at the time stated for delivery or performance (otherwise than by reason of any cause beyond the Buyer's reasonable control or by reason of the Seller's fault) then, without prejudice to any other right or remedy available, the Seller may;

6.6.1 store the Goods until actual delivery and charge the Buyer for the reasonable cost of storage, including insurance;

6.6.2 after the expiration of 3 months from the Delivery Date to dispose of the Goods in such manner as the Seller may determined and;

6.6.3 suspend any further delivery of Goods and/or goods and/or performance of the Services and/or services under the Contract or any other contract.

6.7 The Services shall be performed at the Seller's premises.

7. RISK AND PROPERTY

7.1 Risk of Damage to or loss of the Goods shall pass to the Buyer on the Delivery Date.

7.2 The property in the Goods shall not pass to the Buyer until the Seller has received in cash or cleared funds payment in full of the price of the Goods and all other goods sold or agreed to be sold by the Buyer under any other contract.

7.3 Until such time properly in the Goods shall not pass to the Buyer, the Seller shall be entitled at any time to require the Buyer to deliver up the Goods to the Seller and, If the Buyer fails to do so forthwith, to enter upon any premises of the Buyer or any third party where the Goods are stored and repossess the Goods and for the purpose the Buyer hereby authorize and license the Seller, its officers, employees and agents to enter upon any land or building upon which the Goods are situated to recover those goods, and the Buyer shall indemnify the Seller against all cost, damages, charges and expenses in such regard.

8. WARRANTIES AND LIABILITIES

THE BUYER'S ATTENTION IS IN PARTICULAR DRAWN TO THE PROVISIONS OF THIS CLAUSE 8.

8.1 The Seller warrants that the Goods will be free from defects in material and workmanship for a period of 3 months from the Delivery Date and that the Services will be performed with reasonable care and skill.

8.2 The above warranties are given by the Seller subject to the following conditions:

8.2.1 The Seller shall be under no liability in respect of any failure or defect arising from any Tooling, drawing, design, or specification supplied by the Buyer;

8.2.2 The Seller shall be under no liability in respect of any defect or failure arising from fair wear and tear, willful damage, negligence, abnormal working condition, failure to follow the Seller's instructions (whether oral or in writing), misuse or alteration or repair of the Goods without the Seller's prior approval;

8.2.3 If the total price has not been paid by the due date, the Seller shall be under no liability until the total price has been paid.

8.2.4 The above warranties do not extend to parts, materials or equipment not manufactured by the Seller, in respect of which the Buyer shall only be entitled to the benefit or any such warranty or guarantee as it give by the manufacturer to the Seller;

8.2.5 The Seller shall under no liability in respect of any failure or defect is within reasonable commercial tolerances.

8.3 Subject as expressly provided in these Conditions, all warranties, conditions and other terms implied by statute or law are excluded to the fullest extent permitted by law.

8.4 Any claim by the Buyer which is based on any defect in the quality or condition of the Goods, any failure to exercise reasonable care and skill or any under or over-delivery of the Goods shall, whether or not delivery is refused by the Buyer, be notified to the Seller within 3 days from the Delivery Date or, where the defect or failure was not apparent on reasonable inspection, within a reasonable time after delivery of the defect or failure and in any event within 7 days of discovery. If delivery is not refused, and the Buyer does not notify the Seller, the Seller shall have no liability for such defect or failure, and the Buyer shall be bound to pay the price as if the Contract has been performed in accordance with its terms.

8.5 Where any valid claim is respect of any of the Goods which is based on any defect in the quality or condition of the Goods or any failure to exercise reasonable care and skill is notified to the Seller in accordance with these Conditions , the Seller shall be entitled to replace the Goods (or part in question) or to re-perform the Services free of charge or, at the Seller's sole discretion, refund to the Buyer the price of the Goods (or a proportionate part of the price) but the Seller shall have no further liability to the Buyer.

8.6 The Seller shall not be liable to the Buyer be reason of any representation , or any implied warranty, condition or other term , or any duty of law, or under the express terms of the contract, for any consequential loss or damage (whether for loss of profit, product recall or otherwise) which arise of or in connection with the supply of the Goods and/or the Services or their use or resale by the Buyer and the entire liability of the Seller under or in connection with the Contract shall not exceed the price under the Contract, except as expressly provided in these Conditions.

8.7 The Seller shall not be liable to the Buyer or to be deemed to be in breach of the Contract by reason any delay in performing, or any failure to perform, any of the Seller's obligation if the delay or failure was due to any cause beyond the Seller's reasonable control.

9. INDEMNITY

THE BUYER'S ATTENTION IN PARTICULAR DRAWN TO THE PROVISIONS OF THE CLAUSE.

9.1 The Buyer shall take or procure the taking of all such steps as may be necessary to ensure the safety of the Seller's employees, agents and contractors or any premises at which the Service is to be provided without limitation, notifying such representatives of any relevant hazards.

9.2 The Buyer shall indemnify and keep indemnified the Seller, its officers, employees agents and sub-contractors against any loss or damage to any property or injury or death of any person caused by any negligent act or omission or willful misconduct of the Buyer, its employees agents or sub-contractors, including all and any costs and expenses relating thereto.

10. TOOLING

10.1 Any Tooling supplied by the Buyer shall remain the property of the Buyer at the Buyer's risk. The Buyer shall be responsible for the repair and maintenance of such Tooling. The Seller shall not use such Tooling in connection with any contract with a third party without the Buyer's prior consent in Writing.

10.2 All tooling used, manufactured or procured in connection with contract and which is not supplied by the Buyer shall be the property of the Seller.

10.3 All any intellectual and industrial property rights comprised in any Tooling shall vest in the party owning such Tooling.

10.4 The Seller reserves the right to charge the Buyer for the cost of storage of the Buyer's Tooling and to required the Buyer to remove such Tooling from the Seller's premises upon not less than three months notice in Writing.

11. INSOLVENCY OF BUYER

11.1 This clause applies if;

11.1.1 The Buyer makes any voluntary arrangement with its creditors or become subject to an administration or similar order (for being an individual firm) become bankrupt or (being a company) goes into liquidation, otherwise than for the purpose of amalgamation or reconstruction; or

11.1.2 An encumbrancer take possession, or a receiver is appointed, of the Buyer's undertaking or any of its property or assets; or

11.1.3 The Buyer ceases, or threatens to cease, to carry on business; or

11.1.4 The Seller reasonably apprehends that any of the events mentioned above is about to occur in relation to the Buyer and notifies the Buyer accordingly.

11.2 If this clause applies then, without prejudice to any other right or remedy available to the Seller, the Seller shall be entitled to cancel the Contract or suspend performance and/or any further deliveries under the Contract without any liability to the Buyer, and if the Goods have been delivered and/or Services performed, but not paid to, the price shall become immediately due and payable.

12. EXPORT TERMS

12.1 The Buyer shall be responsible for complying with any legislation and regulation governing the importation of the Goods into the country of destination and for the payment of any duties thereon.

12.2 Unless otherwise agreed in Writing between the Buyer and the Seller, the Goods shall be delivered ex-works.

12.3 The Buyer shall be responsible for arranging for testing and inspection of the Goods at the Seller's premises before shipment. The Seller shall have no liability for any claim in respect of any defect which would be apparent on inspection and which is made after shipment, or in respect of any damage during transit.

12.4 Payment of all amounts due to the Seller shall be made by irrevocable letter of credit opened by the Buyer in favor of the Seller and confirmed by the Seller's Bank in the United Arab of Emirates, or, if the seller has agreed on or before acceptance of the buyer's order to waive the requirement, by acceptance by the Buyer and delivery to the Seller of a bill of exchange drawn on the Buyer payable 30 days after sight of the order of the Seller at such bank as may be specified on the bill of exchange.

13. GENERAL

13.1 The Buyer shall not be entitled to assign the whole or any part of the Contract without the prior written consent of the Seller.

13.2 No waiver by the Seller of any breach of the Contract by the Buyer shall be considered as a waiver of any subsequent breach of the same or any other provision.

13.3 If any provision of these Condition is held by any competent authority to be invalid or unenforceable in whole or in part the validity of the other provisions of these Conditions and the remainder of the provision in question shall not be affected thereby unless such provisions goes to the root of the Contract.

13.4 The conditions shall constitute the entire agreement in relation to the subject matter and no modification or waiver thereof shall be valid unless made in Writing expressly for the purpose and signed by an authorized officer of the Seller and of the Buyer provided that nothing in these conditions shall exclude or limit liability for fraud.

13.5 The contract shall be governed by the laws applicable in the Emirates of Dubai and the Buyer agrees to submit the non-exclusive jurisdiction of the Dubai courts.

OUR GLOBAL PRESENCE



www.caparomiddleeast.com

- Rigid conduit tube, HDG
- Malleable fittings
- Steel fittings
- Brass fittings
- Switch and socket boxes
- Conduit bending machines
- Flexible Tube and fittings



www.walsallconduits.co.uk

- Rigid conduit tube, HDG
- Malleable fittings
- Steel fittings
- Brass fittings
- Switch and socket boxes
- Conduit bending machines
- Flexible Tube and fittings



www.bullmooseindustries.com

Bull Moose Industries: products and services of exceptional strength

- Bull Moose Tube
- Bull Moose Mobility



www.caparo.co.in

- High Tensile Fasteners
- Automotive, Aerospace and General Engineering Applications
- Carbon Steel, Alloyed Steel and Stainless Steel



www.caparo.co.in

- Forging and machined components parts for automotive and non - automotive application.
- Crank shafts
- Connecting rods
- Transmission parts
- Full range of forging capabilities



wwwcaparo.co.in

- Precision, high pressure and gravity die casting
- Pressure tight cast parts
- Safety critical parts
- Automotive and non - automotive sectors